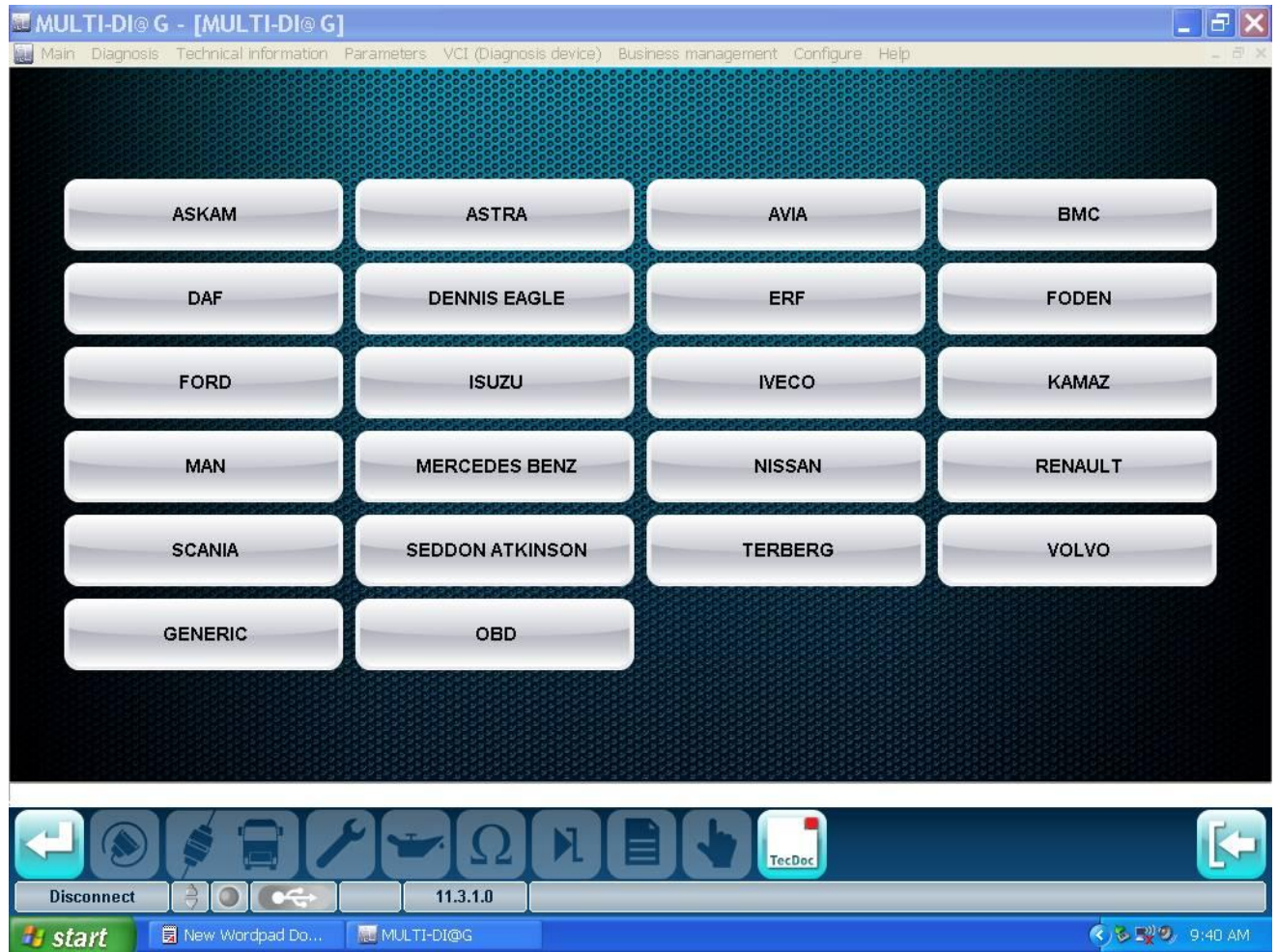
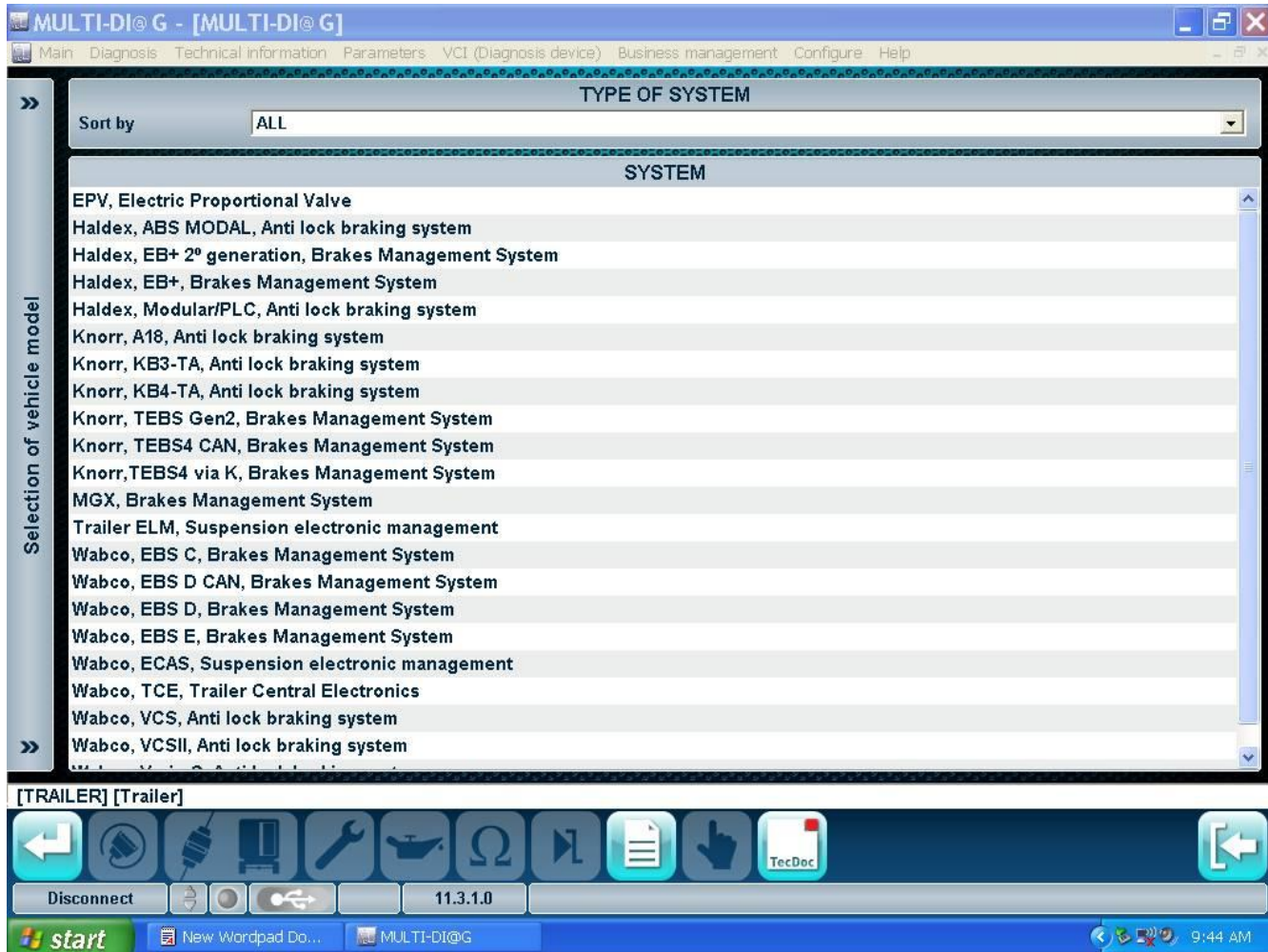


# MULTI-DI@G truck vehicle list

Europe Truck



Trailer



**MULTI-DI@G - [MULTI-DI@G]**

Main Diagnosis Technical information Parameters VCI (Diagnosis device) Business management Configure Help

» **TYPE OF SYSTEM**

Sort by

**SYSTEM**

Selection of vehicle model

- Haldex, ABS MODAL, Anti lock braking system
- Haldex, EB+ 2° generation, Brakes Management System
- Haldex, EB+, Brakes Management System
- Haldex, Modular/PLC, Anti lock braking system
- Knorr, A18, Anti lock braking system
- Knorr, KB3-TA, Anti lock braking system
- Knorr, KB4-TA, Anti lock braking system
- Knorr, TEBS Gen2, Brakes Management System
- Knorr, TEBS4 CAN, Brakes Management System
- Knorr, TEBS4 via K, Brakes Management System
- MGX, Brakes Management System
- Trailer ELM, Suspension electronic management
- Wabco, EBS C, Brakes Management System
- Wabco, EBS D CAN, Brakes Management System
- Wabco, EBS D, Brakes Management System
- Wabco, EBS E, Brakes Management System
- Wabco, ECAS, Suspension electronic management
- Wabco, TCE, Trailer Central Electronics
- Wabco, VCS, Anti lock braking system
- Wabco, VCSII, Anti lock braking system
- » Wabco, Vario C, Anti lock braking system

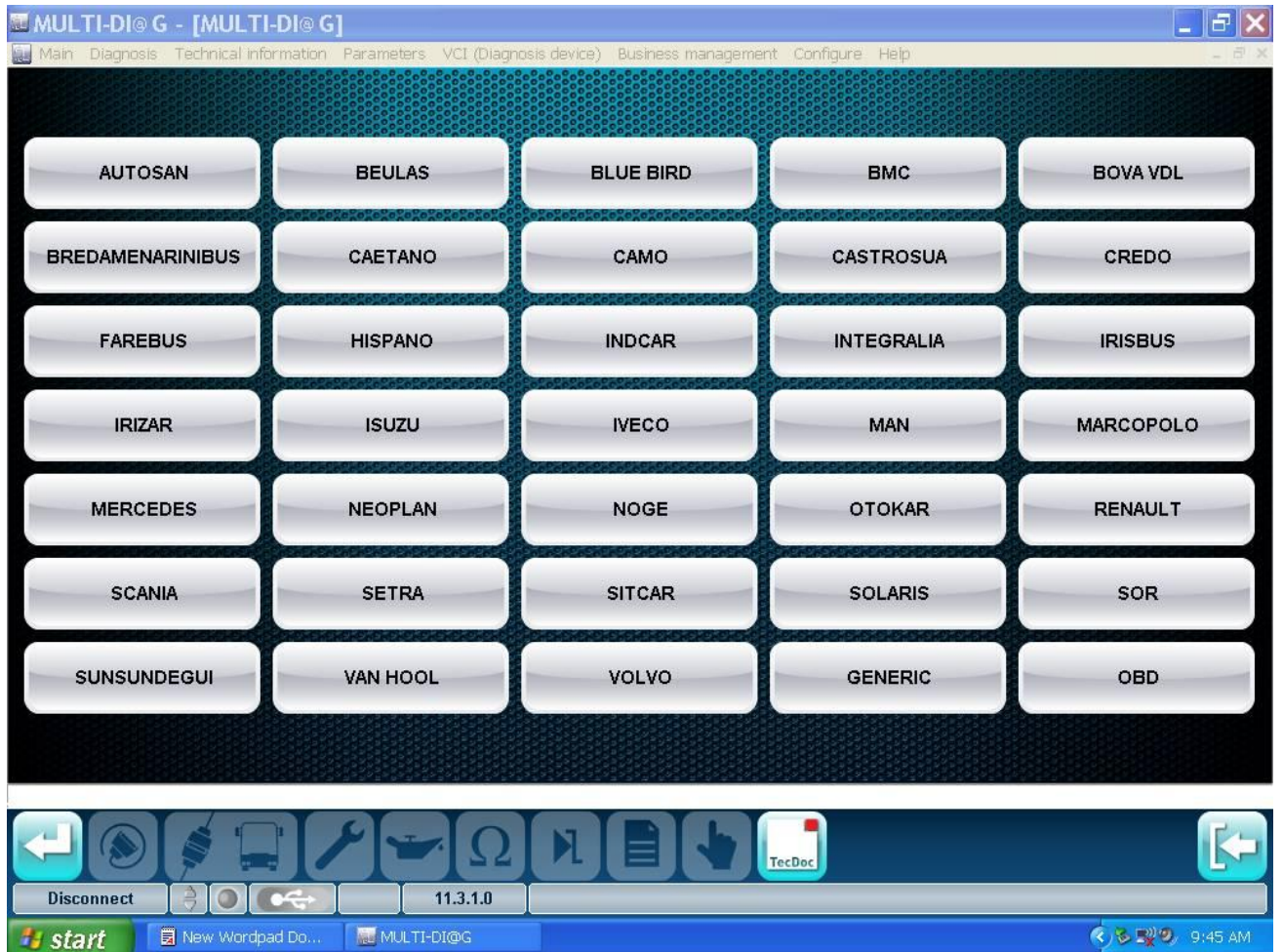
[TRAILER] [Trailer]

Disconnect

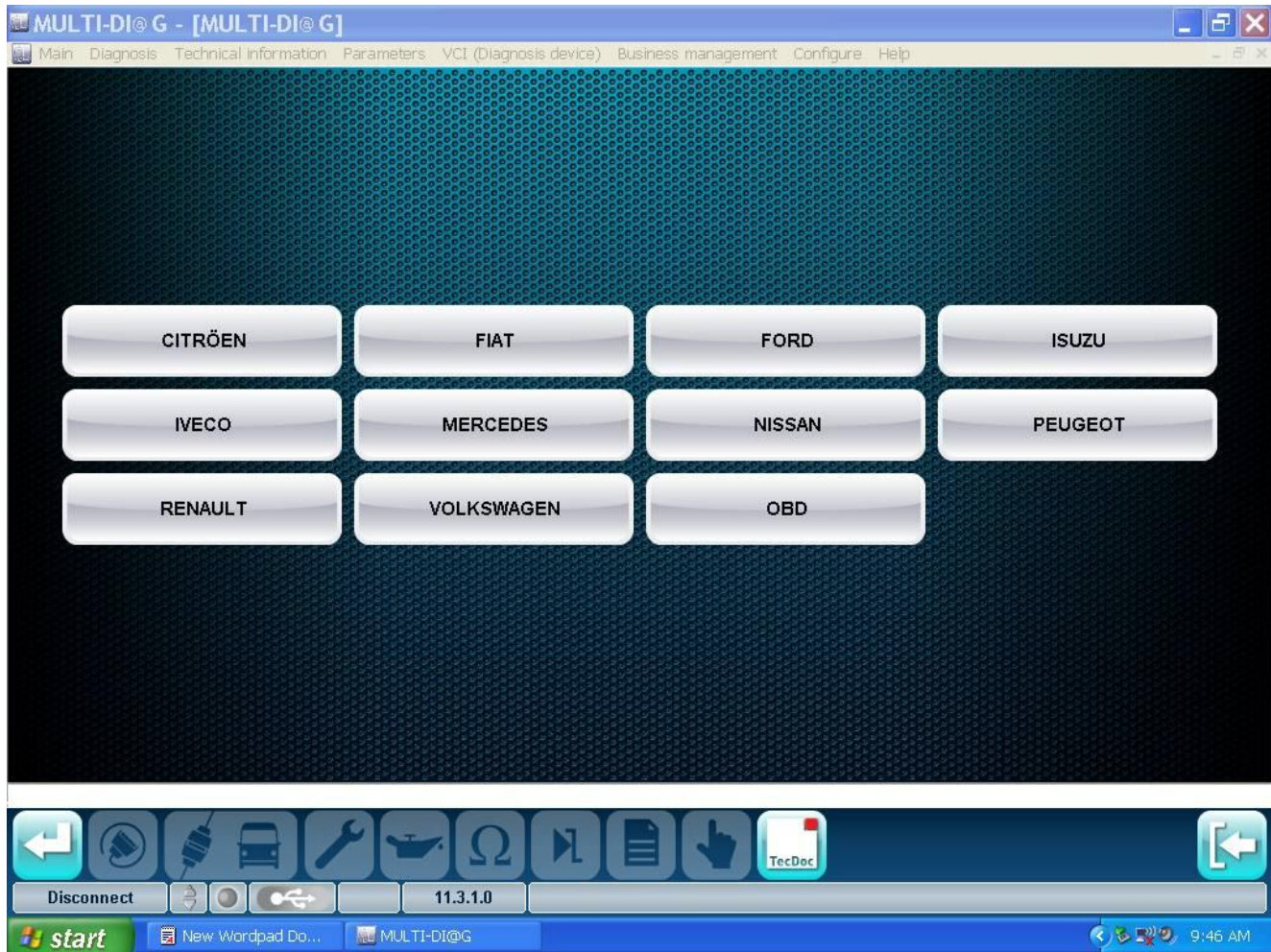
11.3.1.0

start New Wordpad Do... MULTI-DI@G

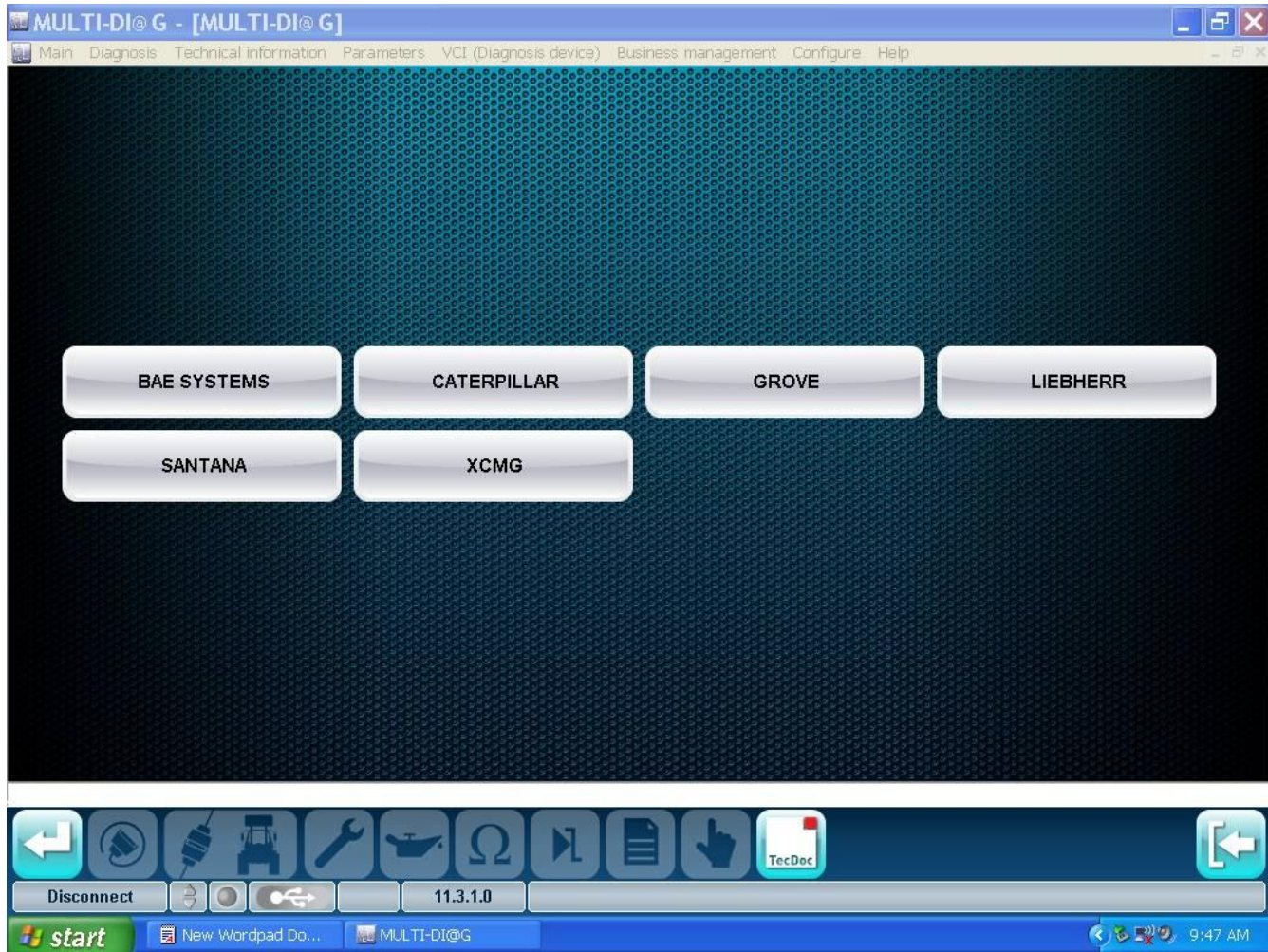
Bus



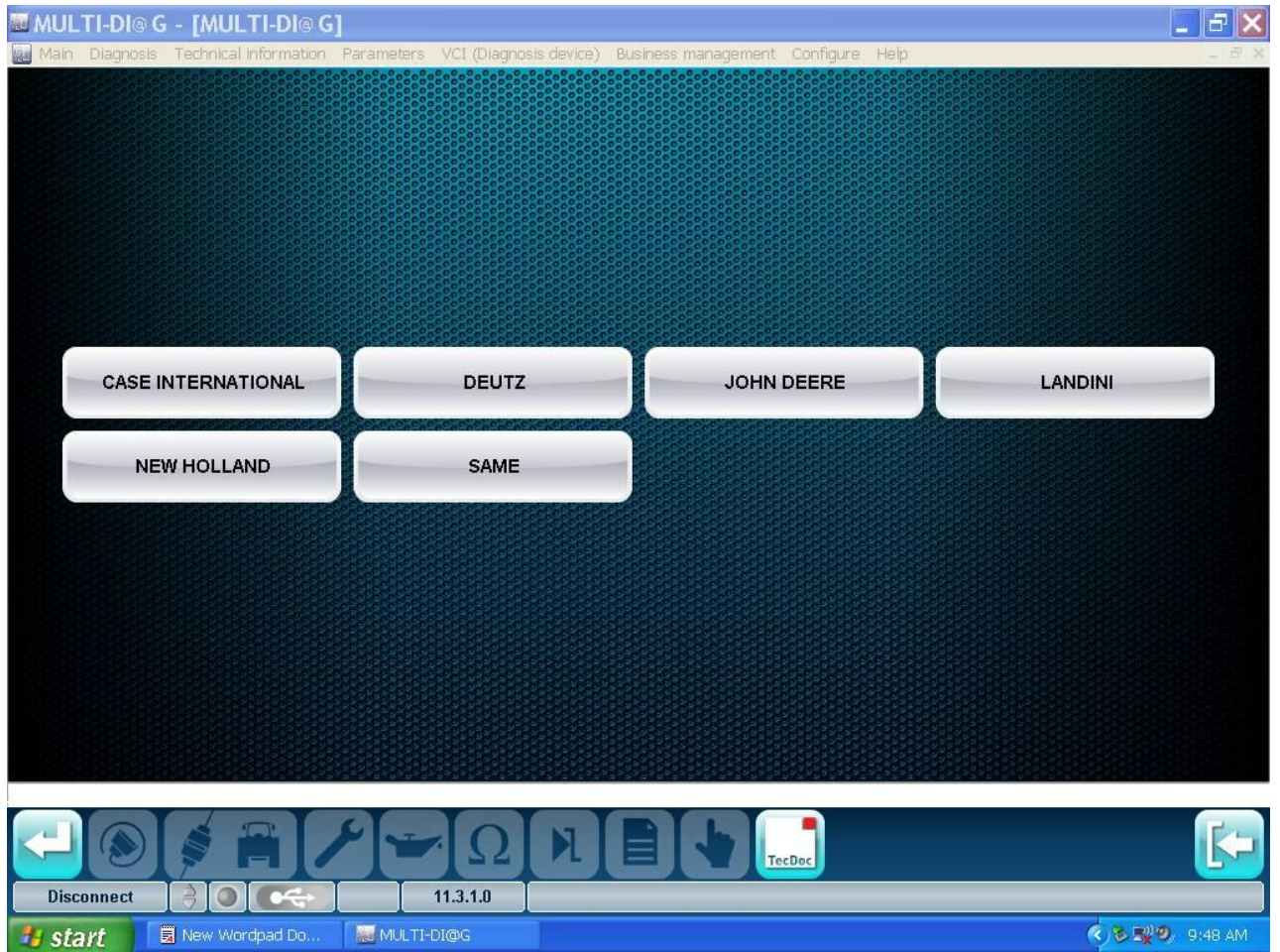
Light Commercial Vehicles



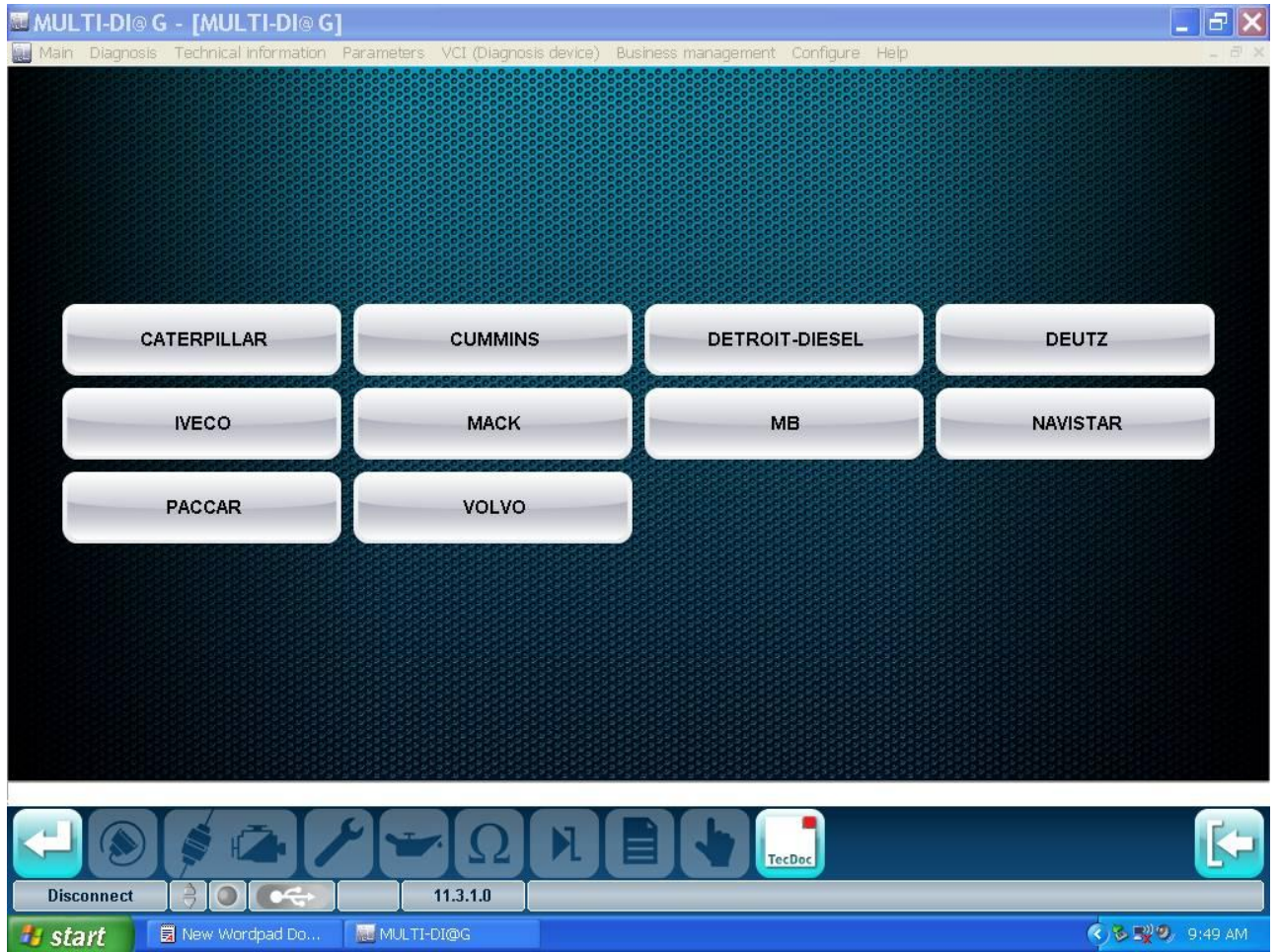
Special Vehicles



Agricultural Vehicles

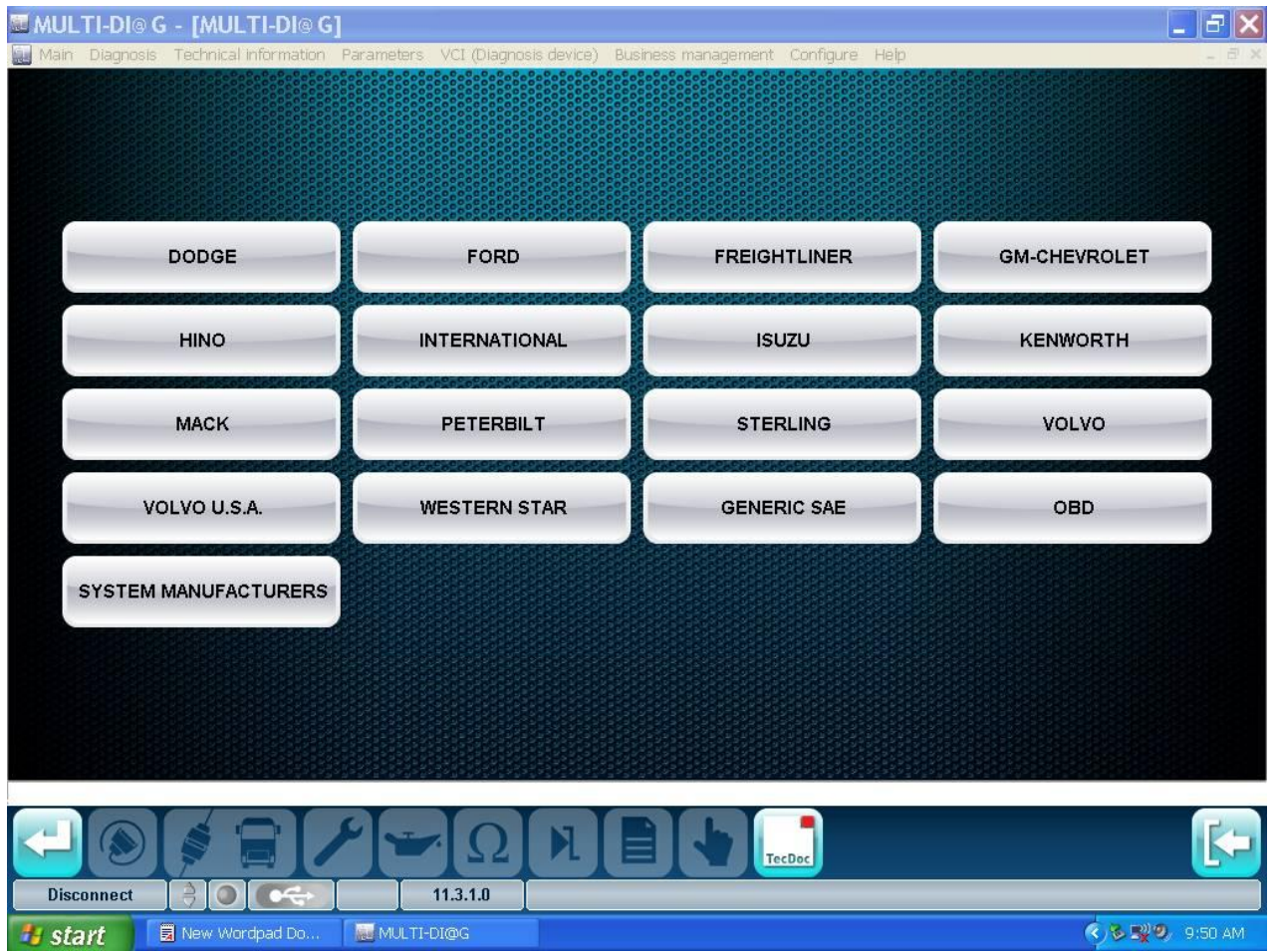


Engines

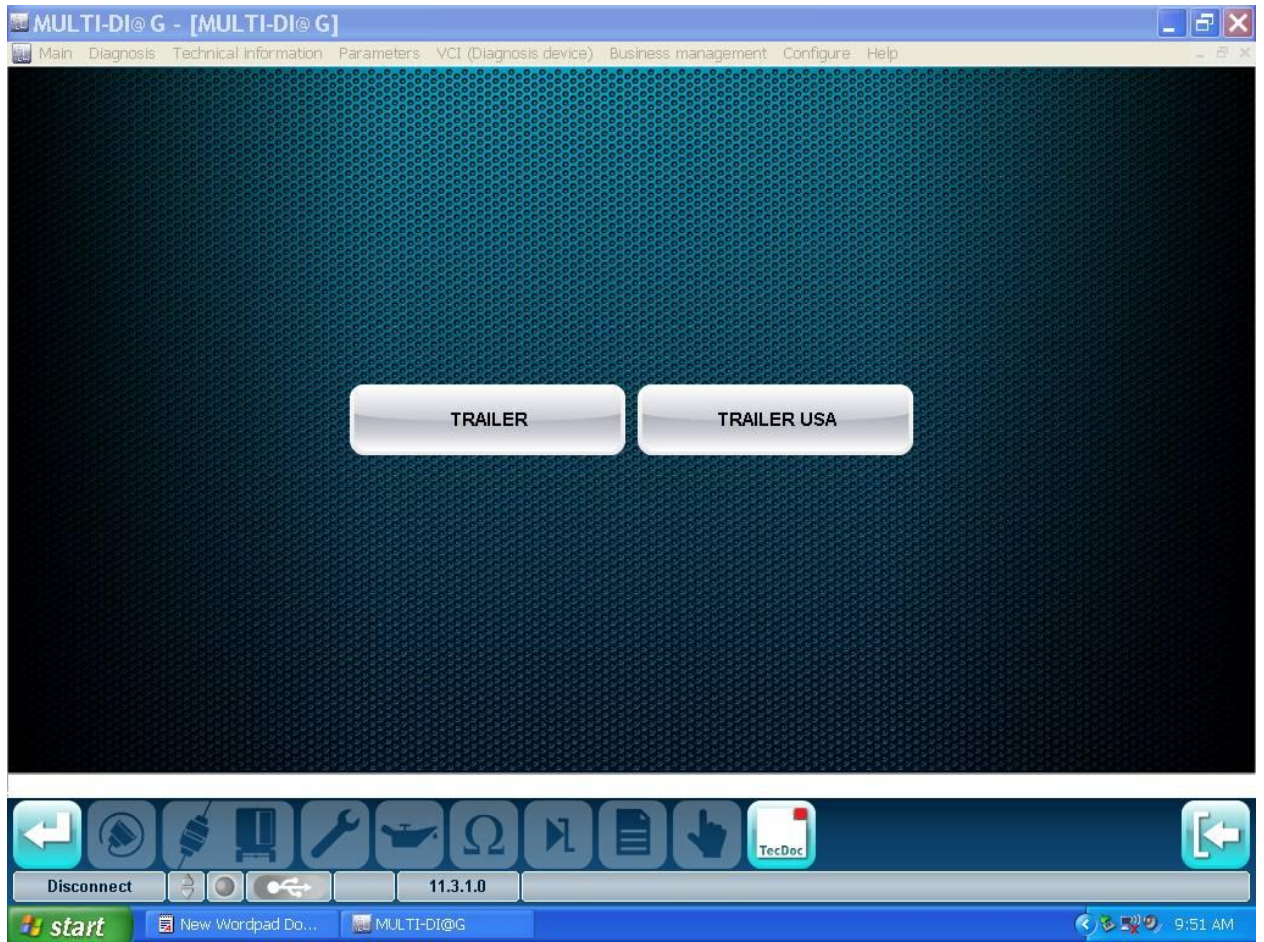


American Truck

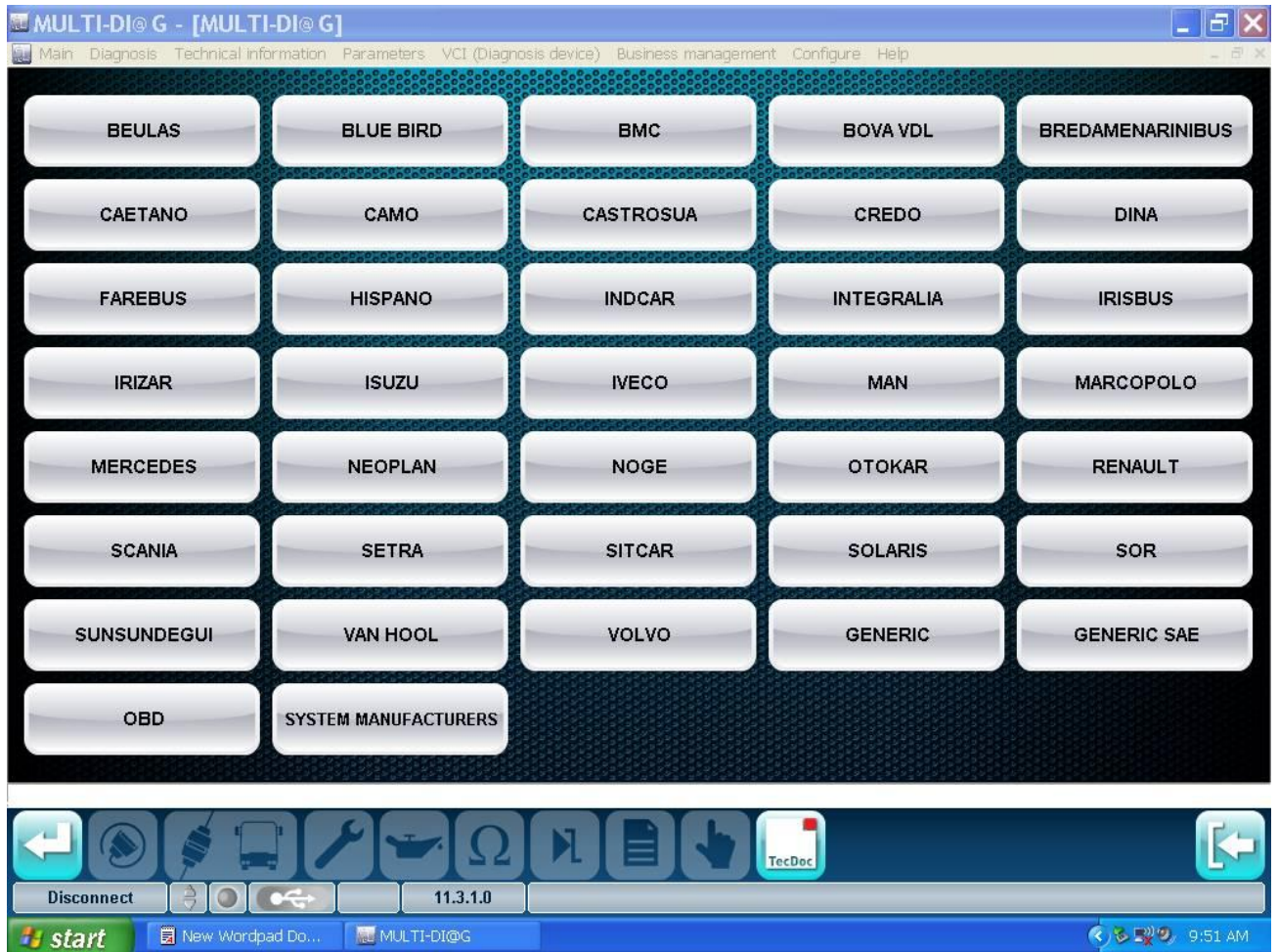




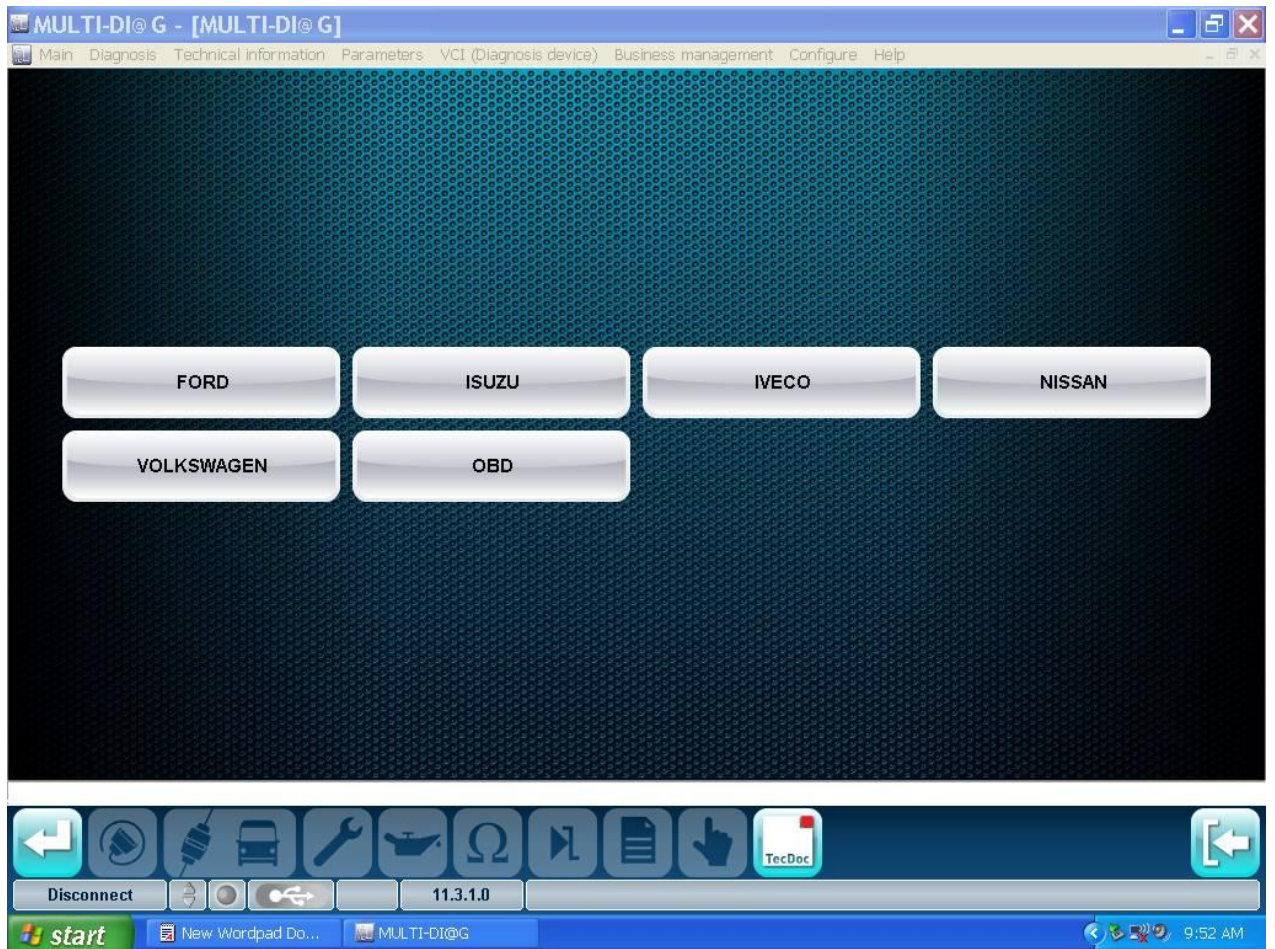
Trailer



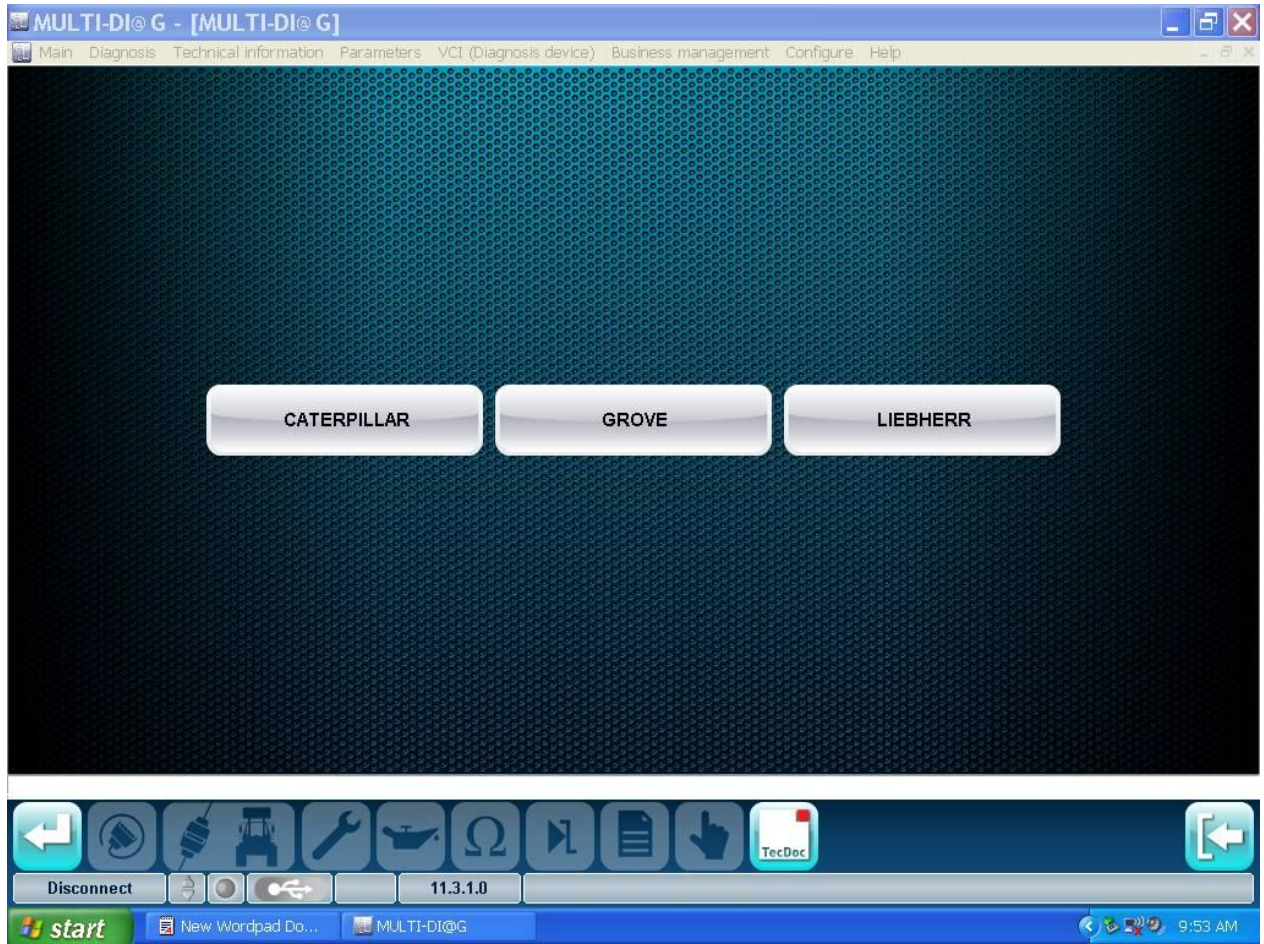
Bus



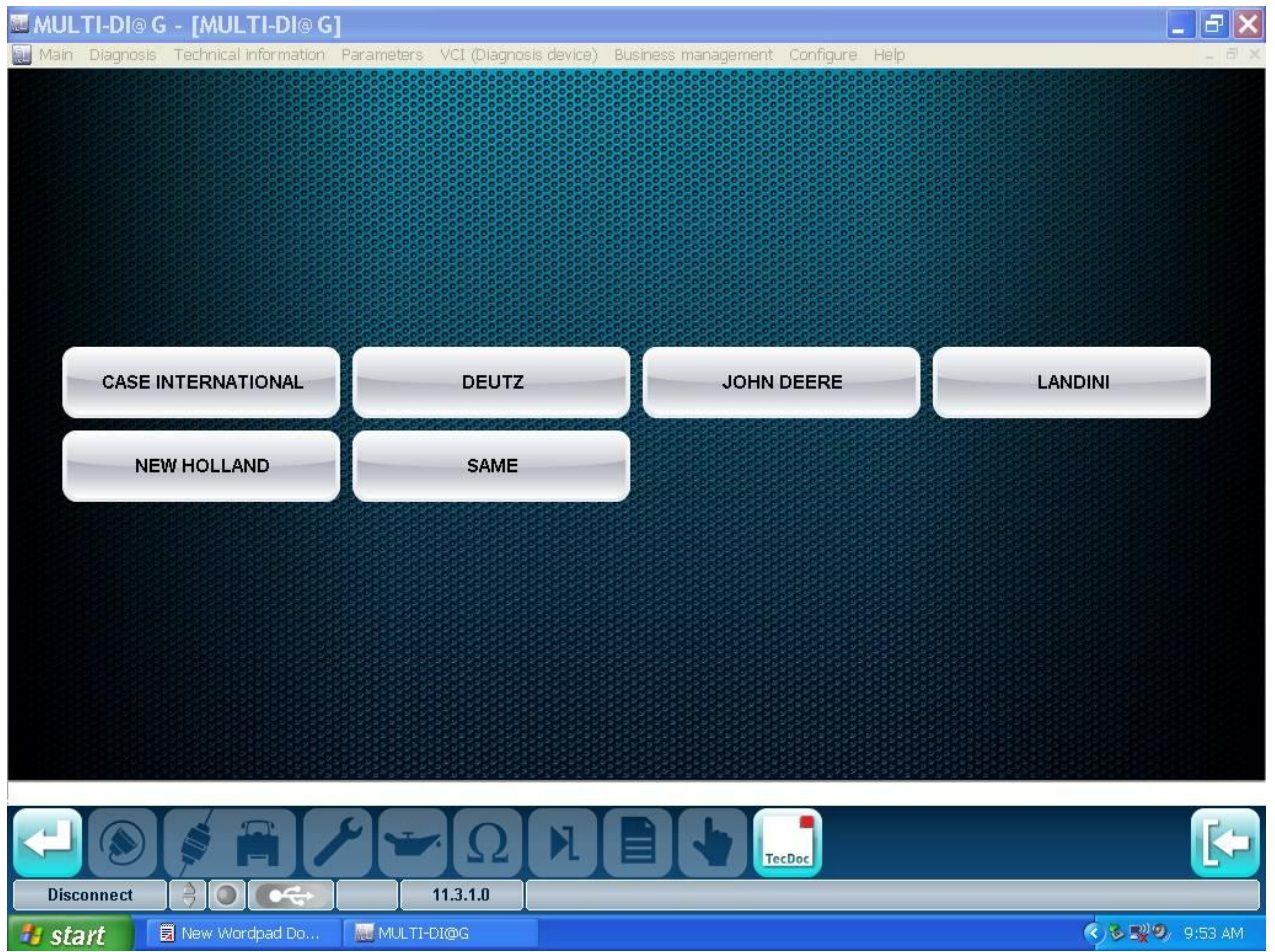
Light Commercial Vehicles



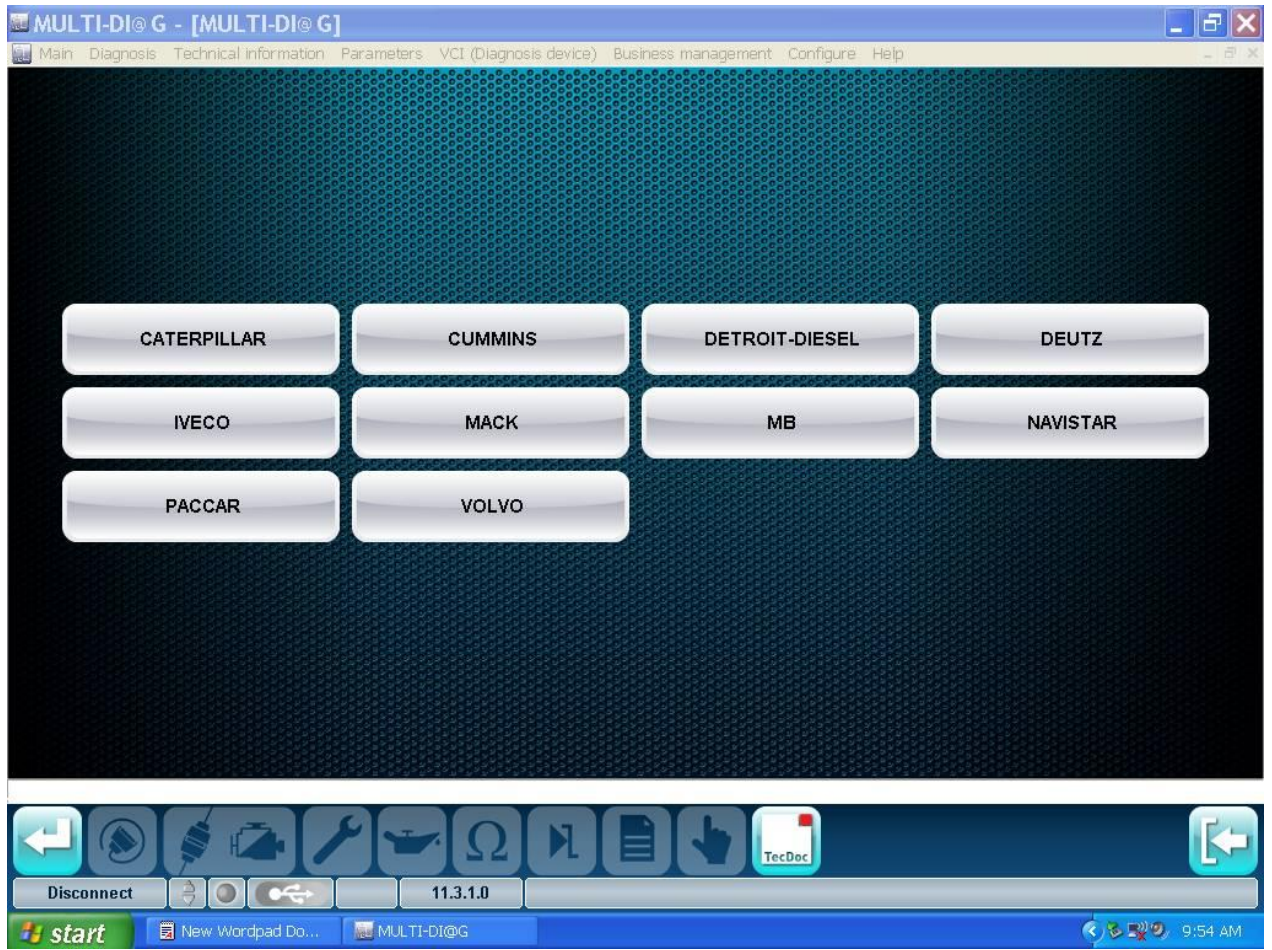
Special vehicles



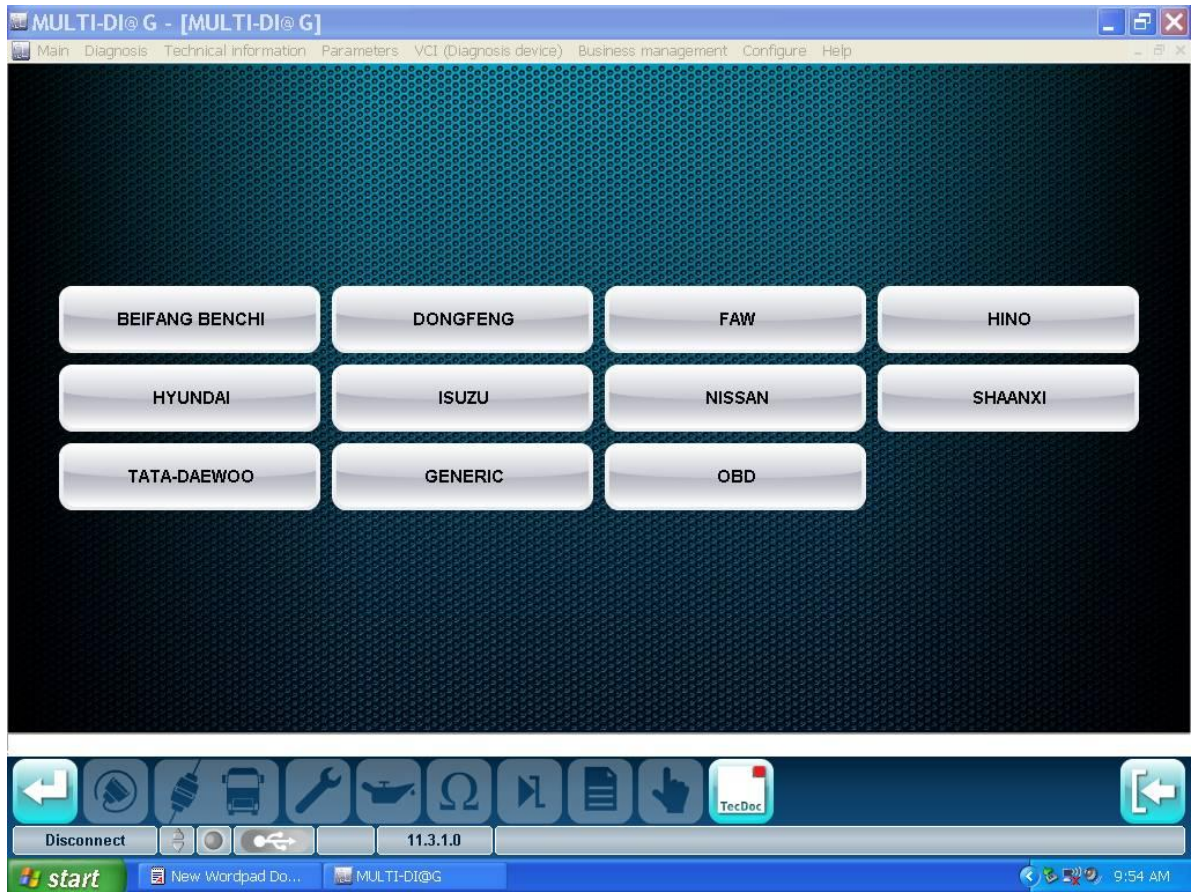
Agricultural vehicles



Engines



Asian Truck



Trailer



MULTI-DI@G - [MULTI-DI@G]

Main Diagnosis Technical information Parameters VCI (Diagnosis device) Business management Configure Help

TYPE OF SYSTEM

Sort by ALL

SYSTEM

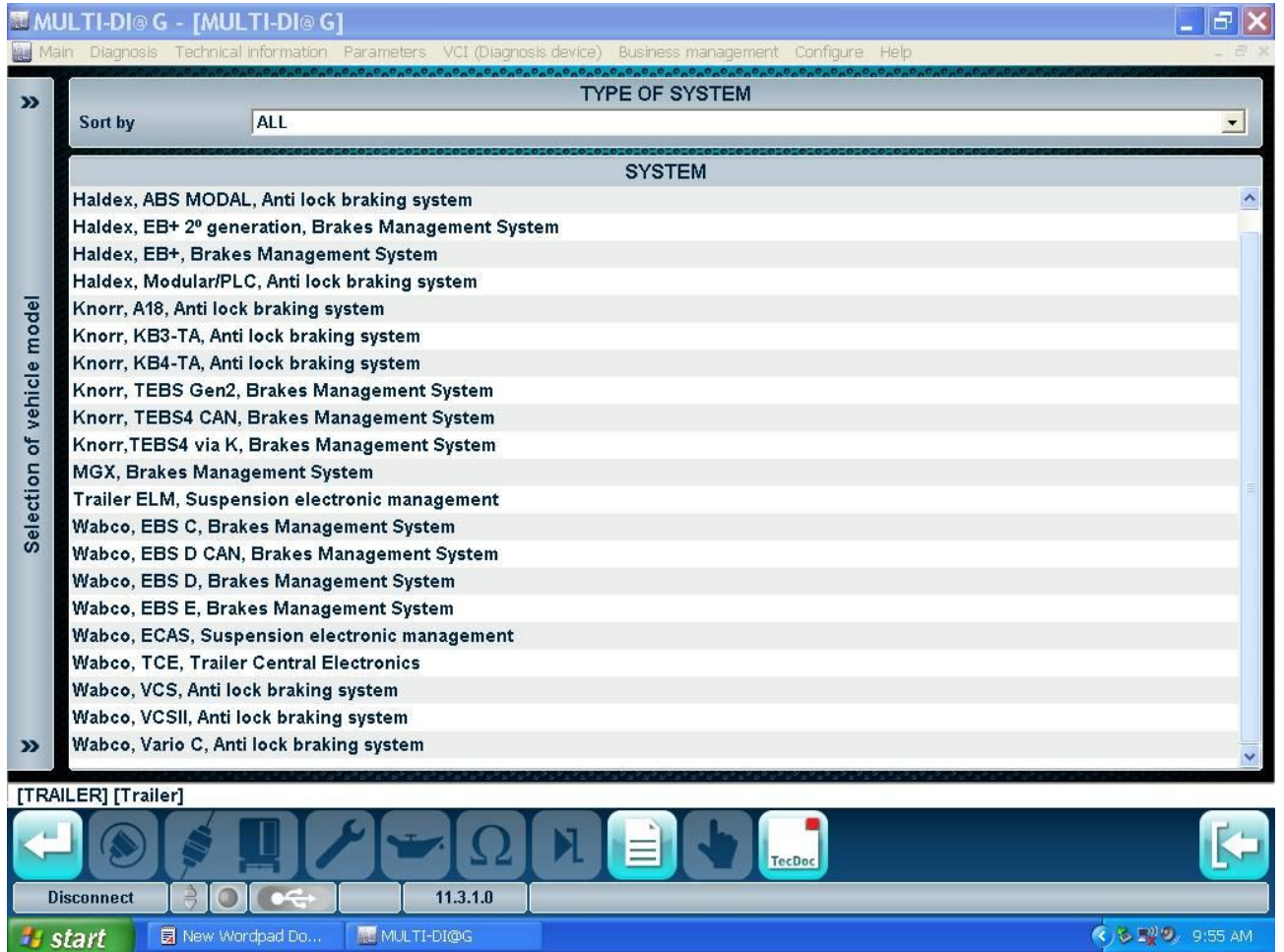
Selection of vehicle model

- EPV, Electric Proportional Valve
- Haldex, ABS MODAL, Anti lock braking system
- Haldex, EB+ 2<sup>o</sup> generation, Brakes Management System
- Haldex, EB+, Brakes Management System
- Haldex, Modular/PLC, Anti lock braking system
- Knorr, A18, Anti lock braking system
- Knorr, KB3-TA, Anti lock braking system
- Knorr, KB4-TA, Anti lock braking system
- Knorr, TEBS Gen2, Brakes Management System
- Knorr, TEBS4 CAN, Brakes Management System
- Knorr, TEBS4 via K, Brakes Management System
- MGX, Brakes Management System
- Trailer ELM, Suspension electronic management
- Wabco, EBS C, Brakes Management System
- Wabco, EBS D CAN, Brakes Management System
- Wabco, EBS D, Brakes Management System
- Wabco, EBS E, Brakes Management System
- Wabco, ECAS, Suspension electronic management
- Wabco, TCE, Trailer Central Electronics
- Wabco, VCS, Anti lock braking system
- Wabco, VCSII, Anti lock braking system

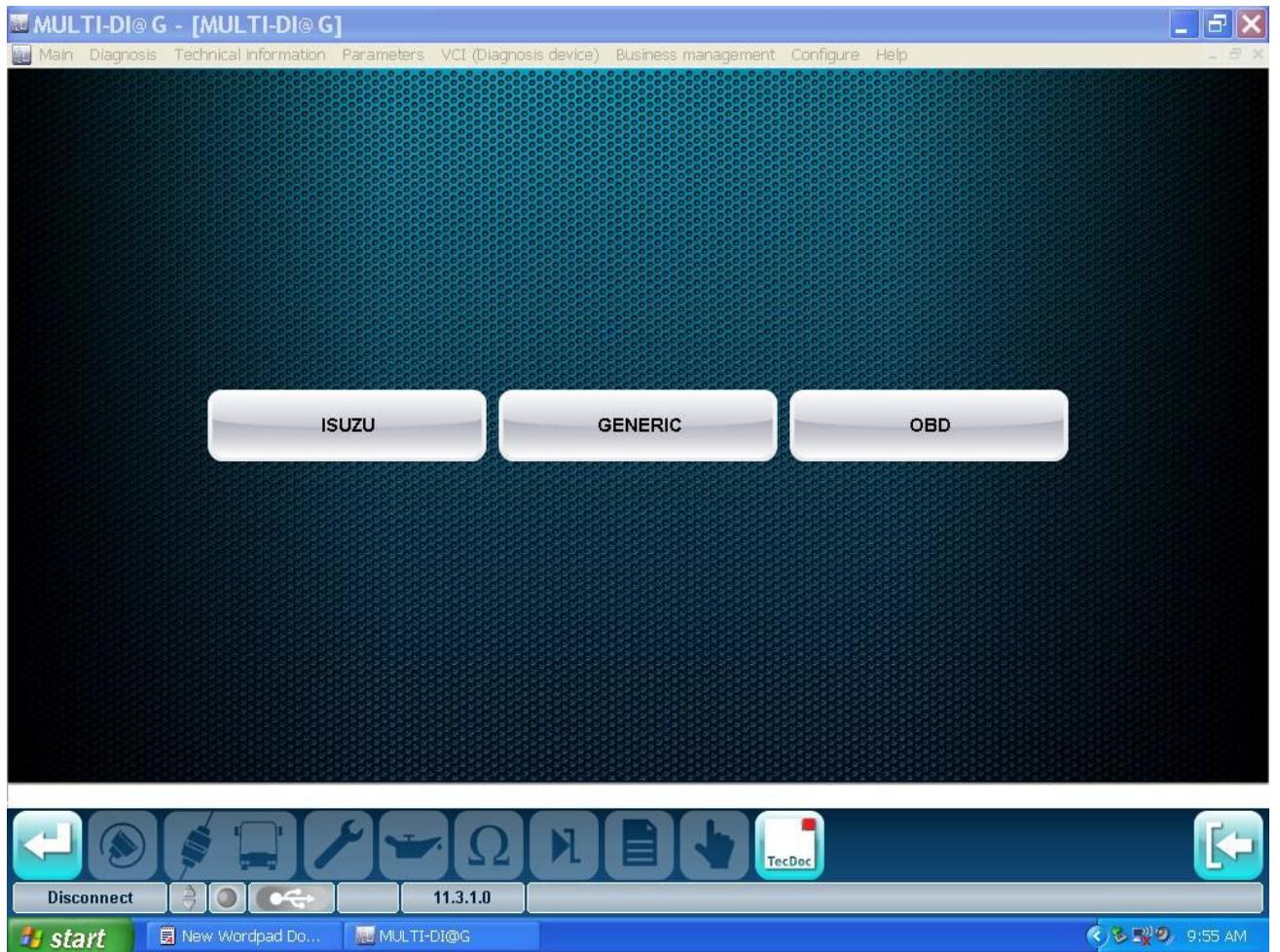
[TRAILER] [Trailer]

Disconnect 11.3.1.0 TecDoc

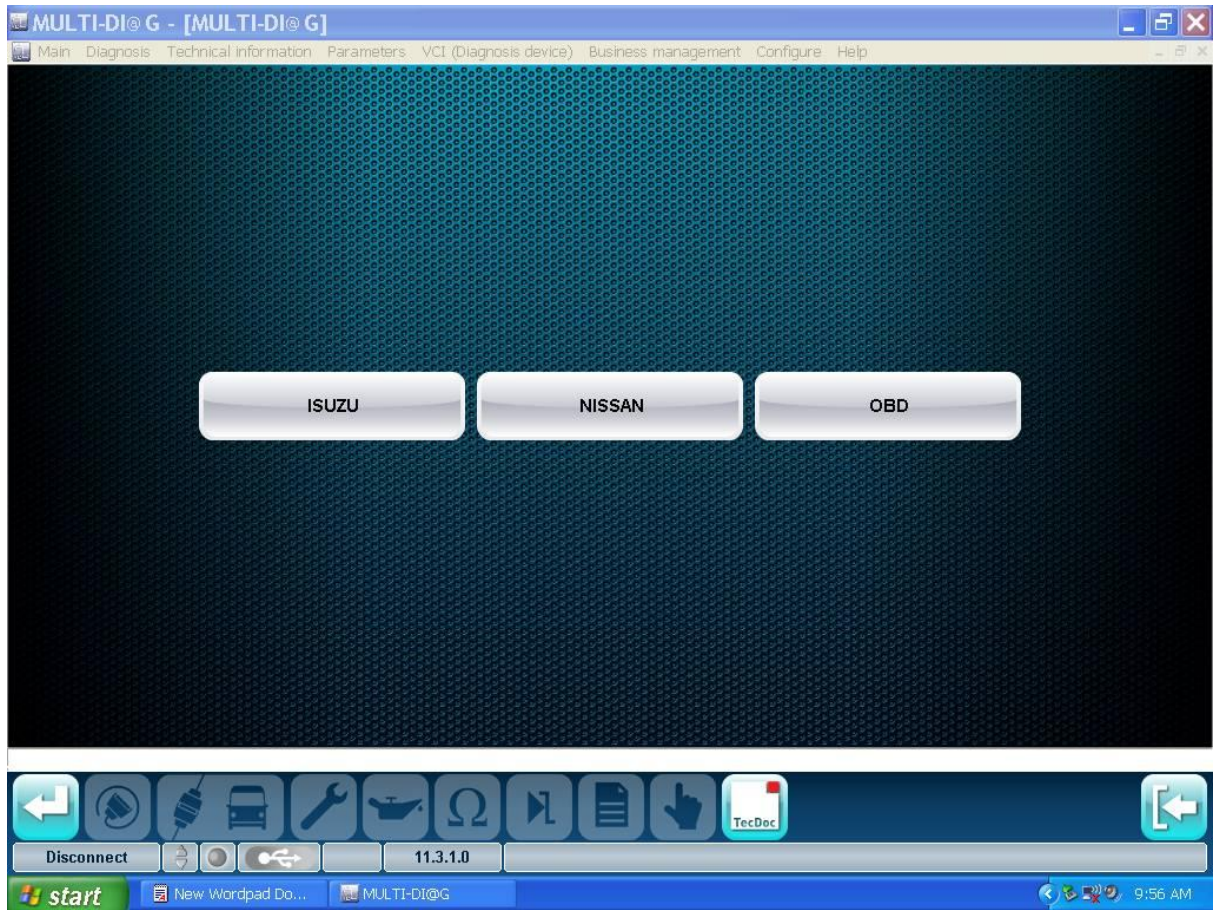
start New Wordpad Do... MULTI-DI@G 9:55 AM



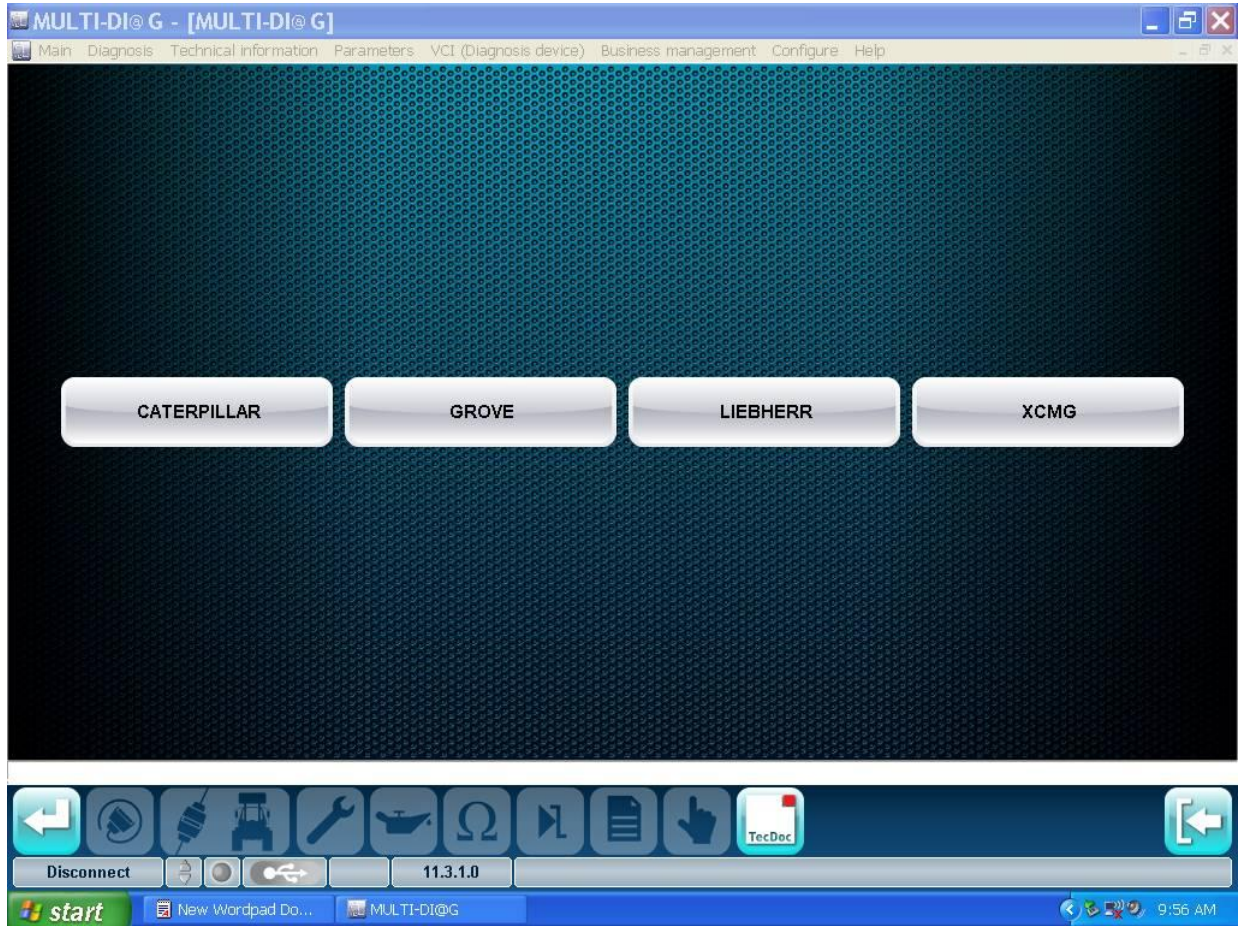
Bus



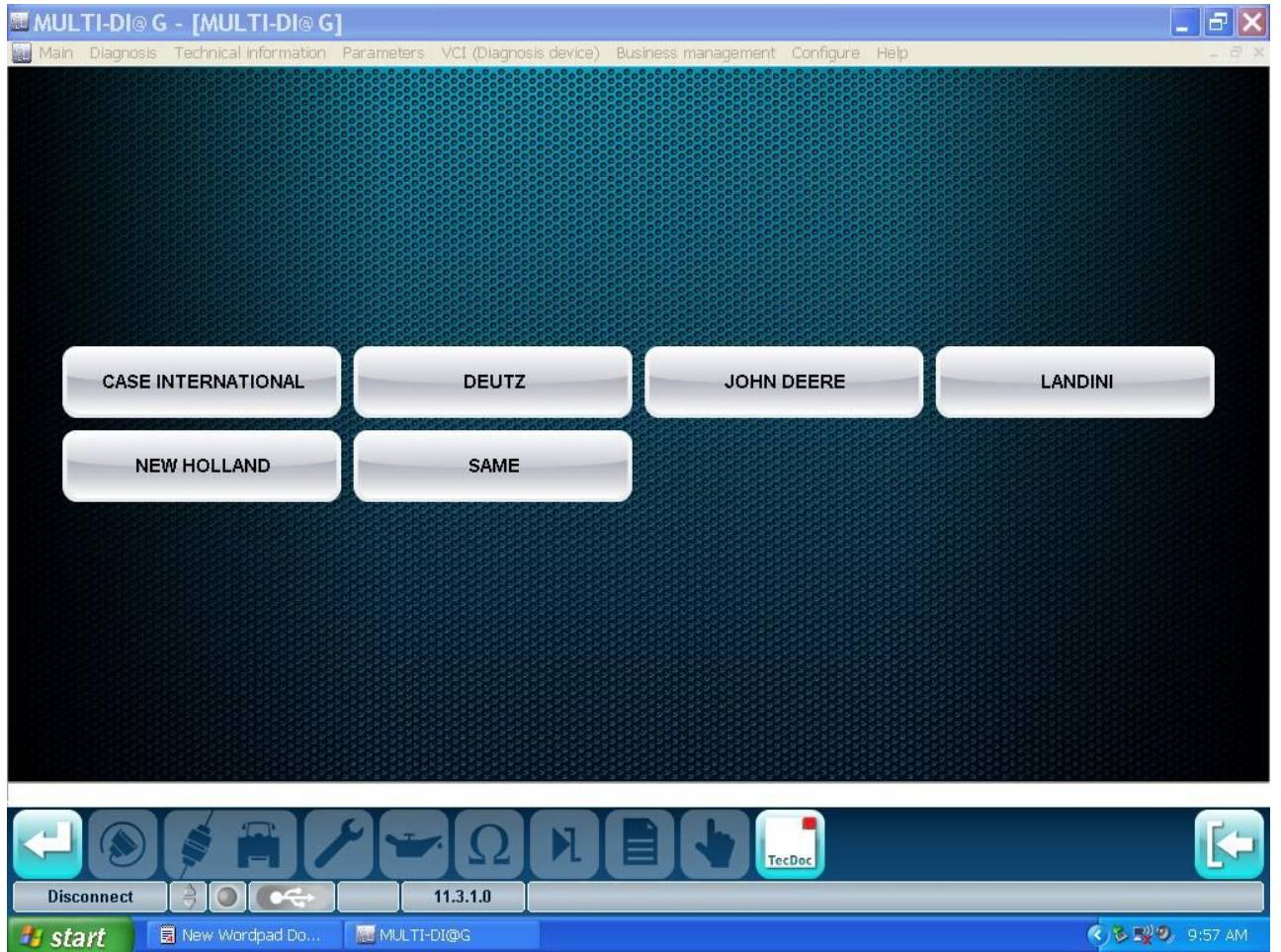
Light Commercial Vehicles



special vehicles



Agricultural Vehicles



Engines

