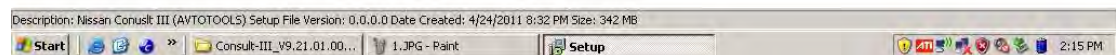
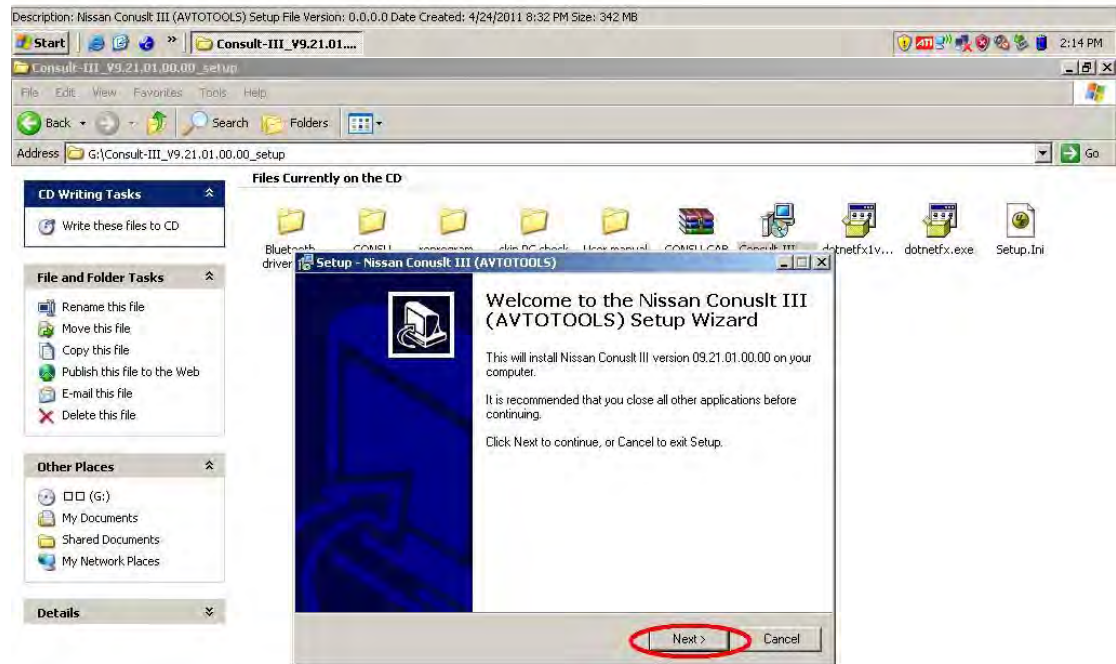
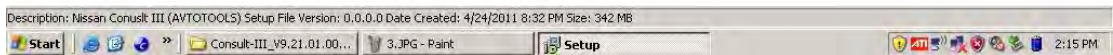
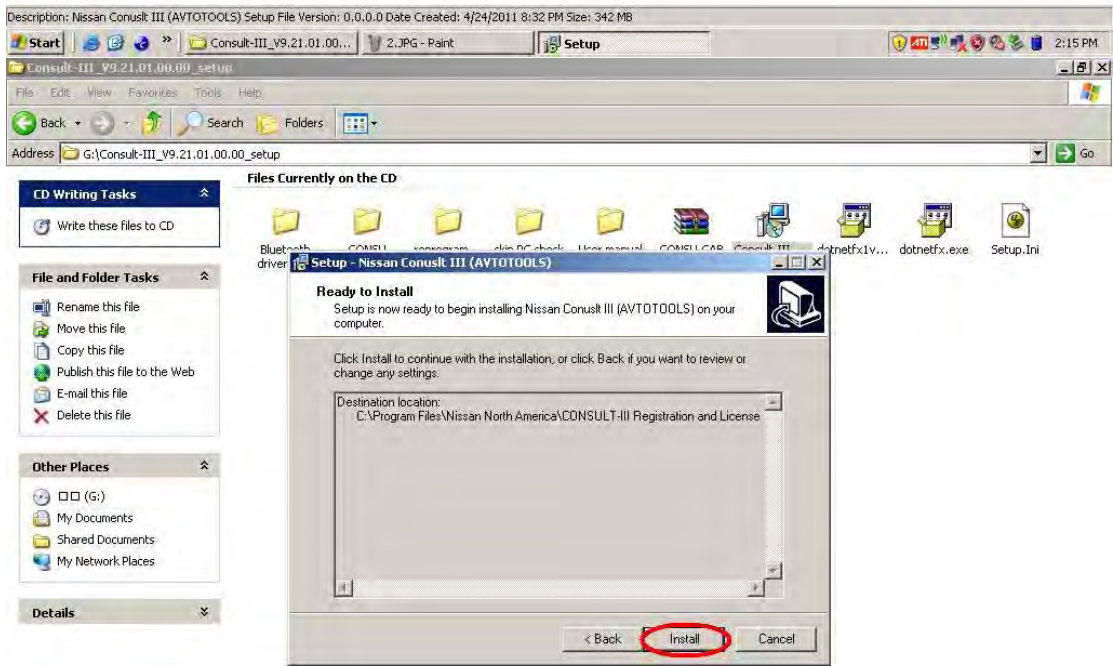
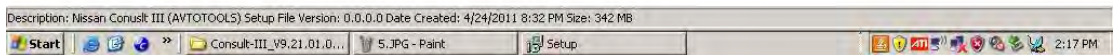
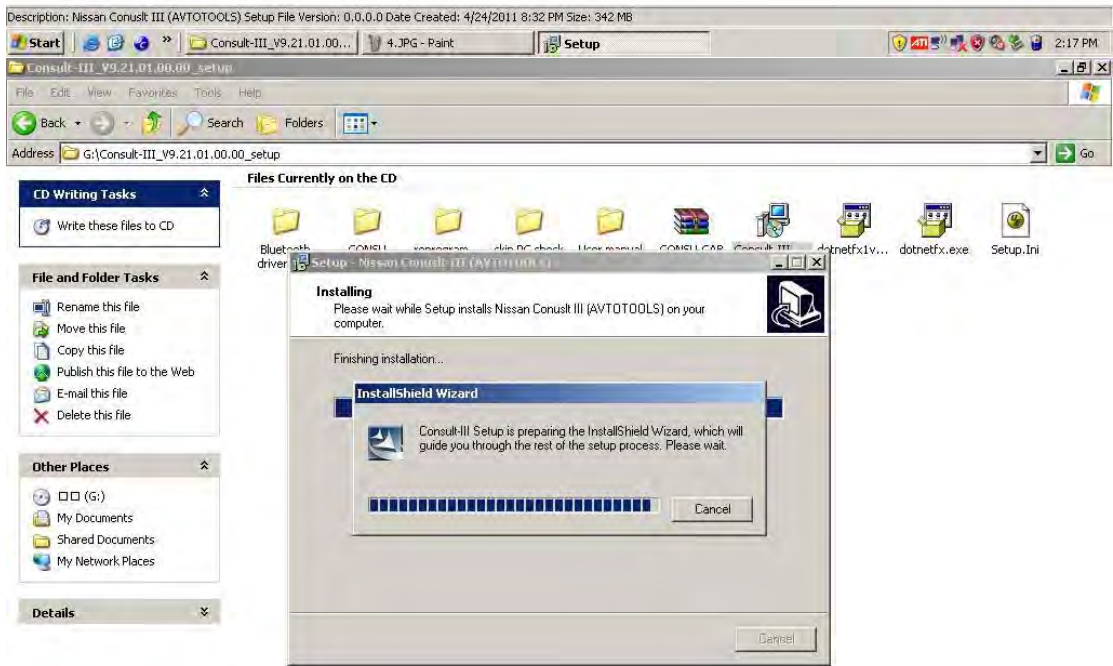
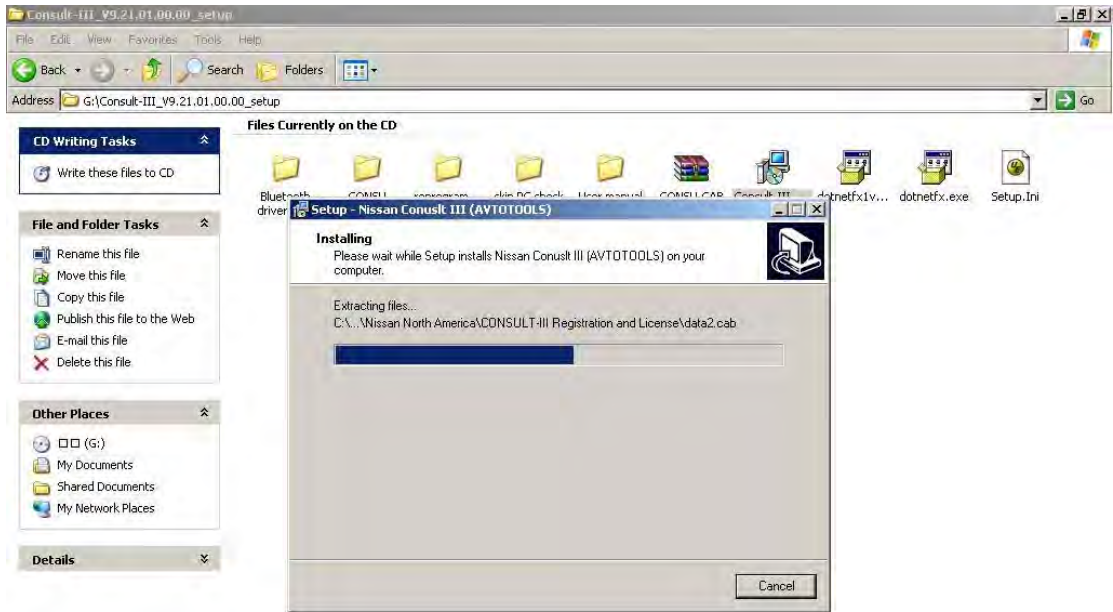


## Nissan Consult3(SP38-B) Installation Step and Registration Step

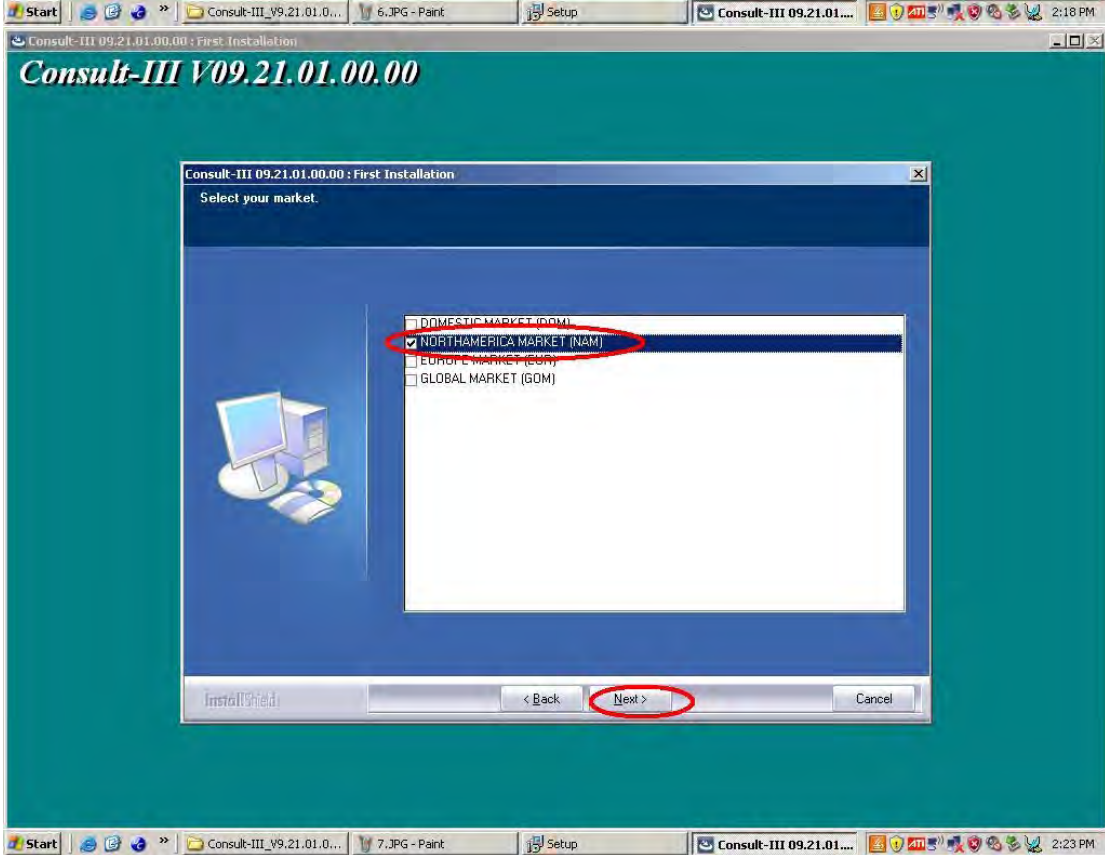
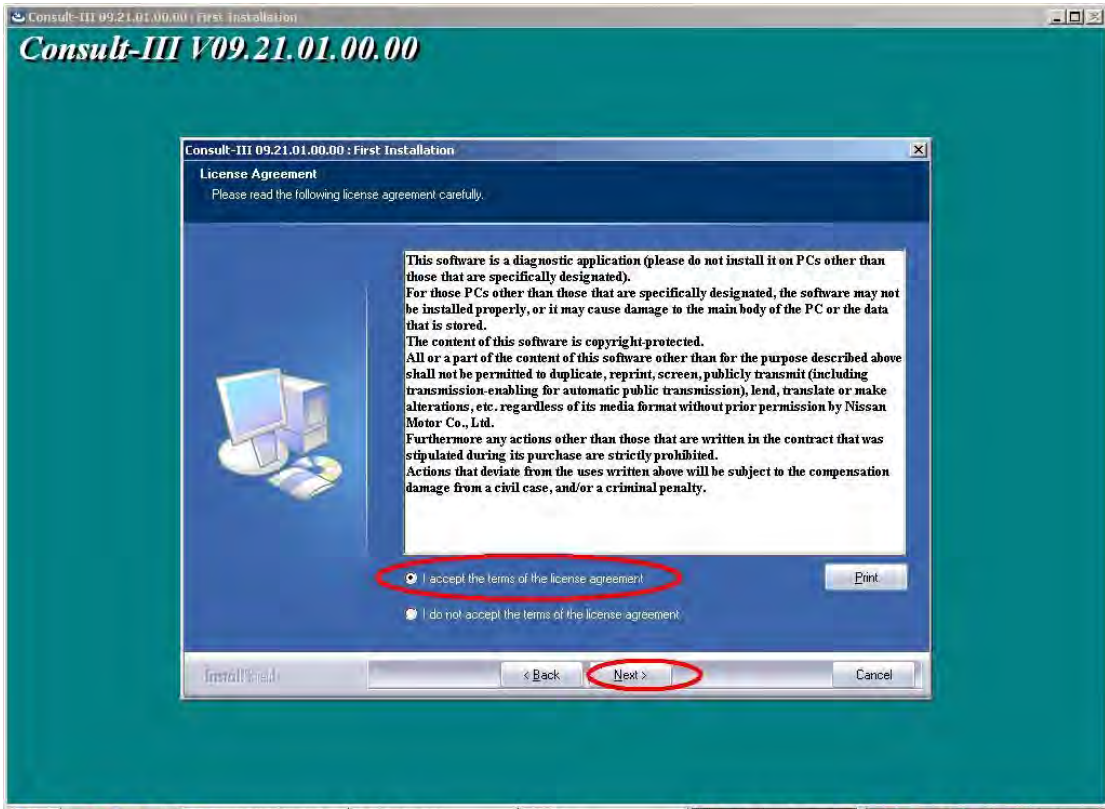
Firstly, install consult III step.exe

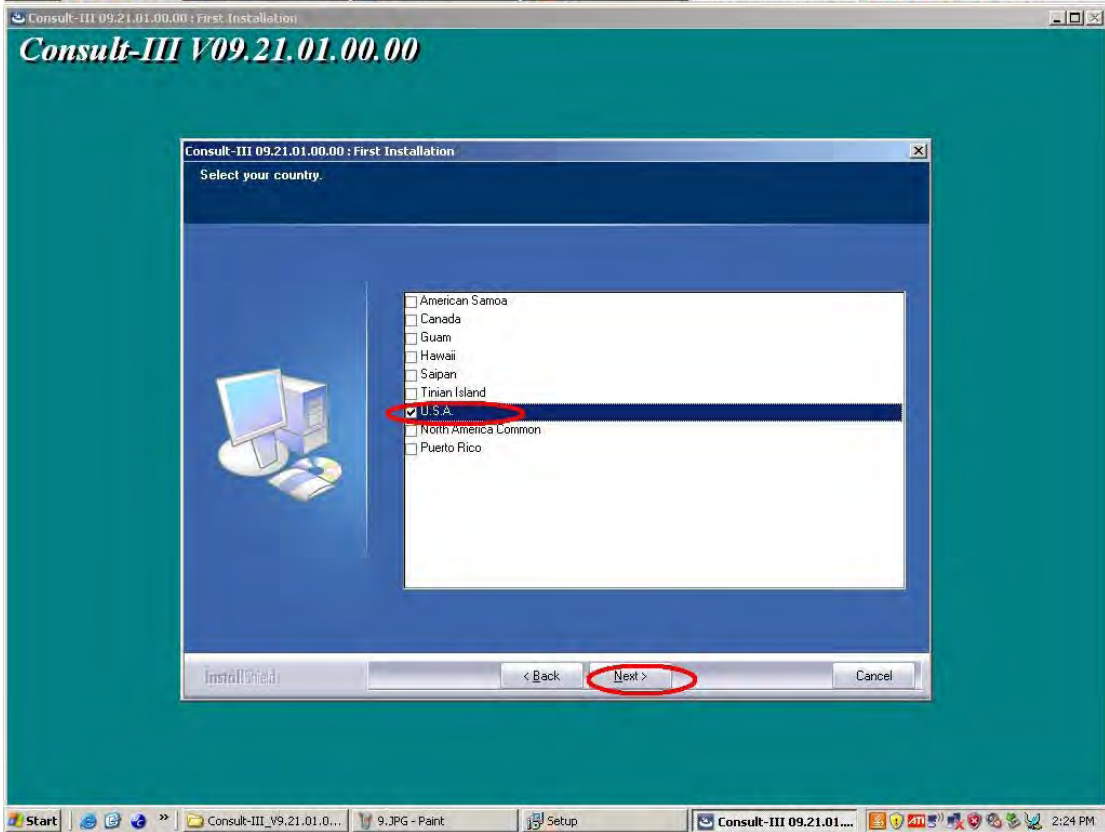
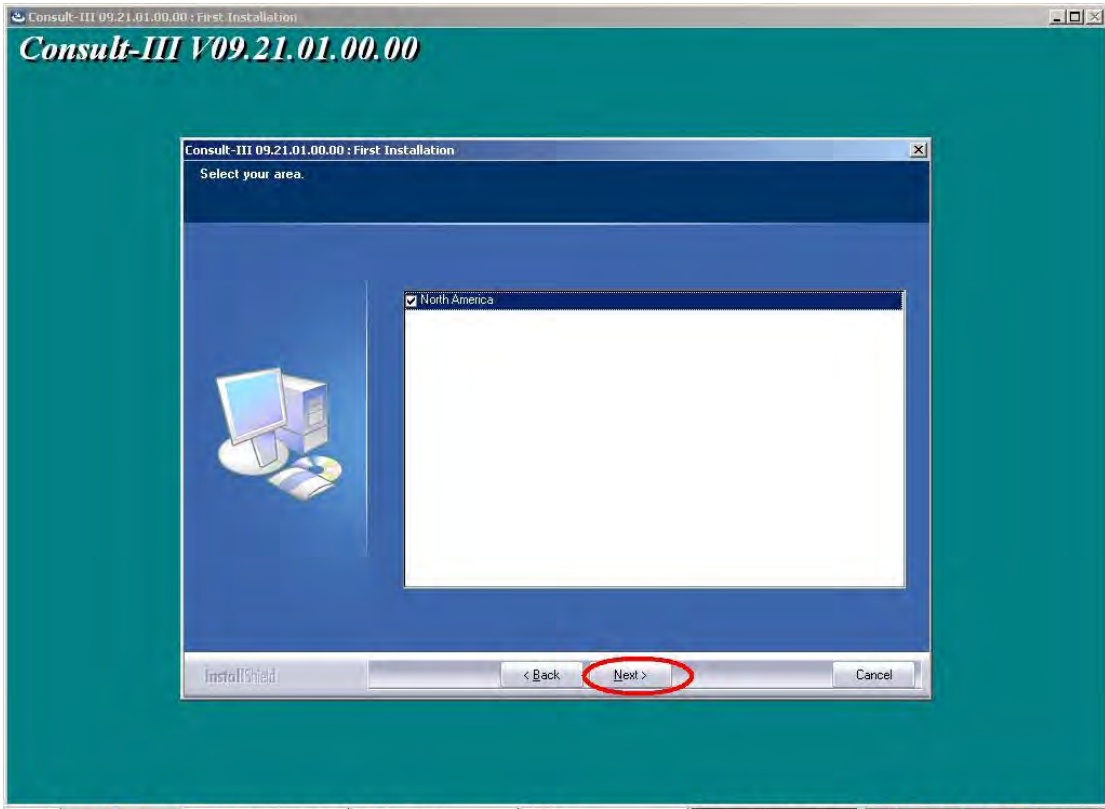


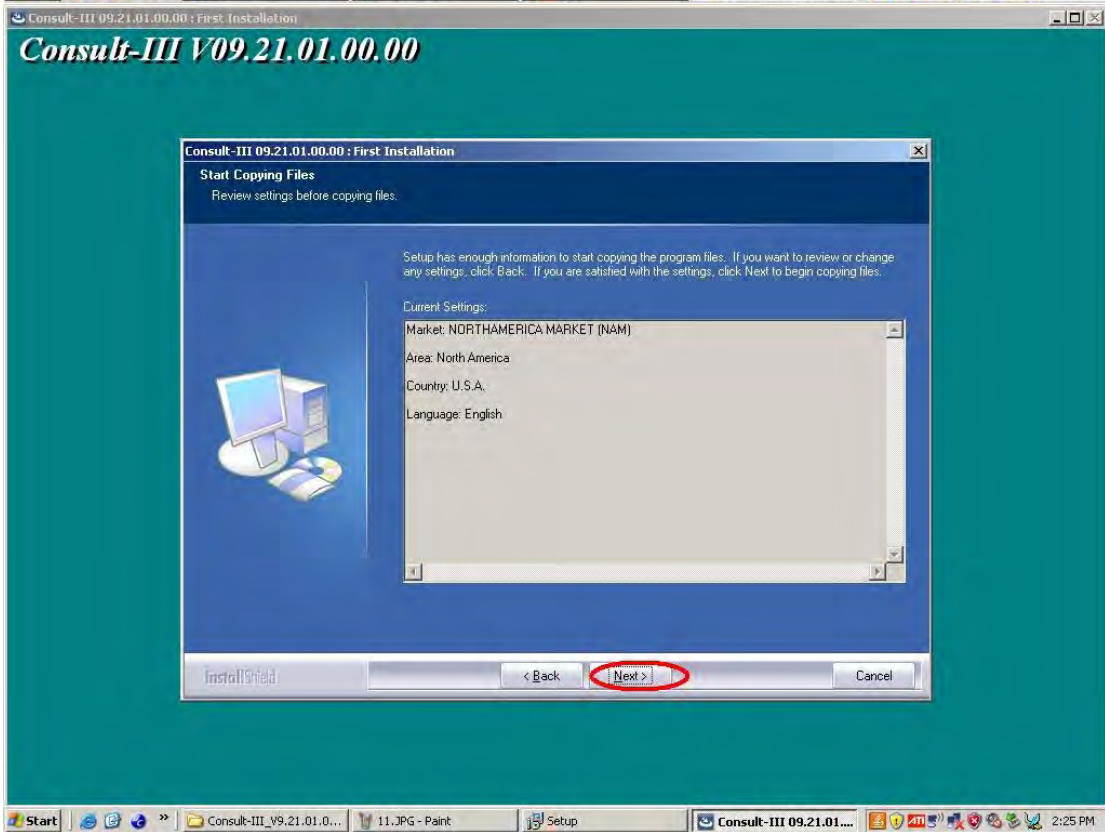
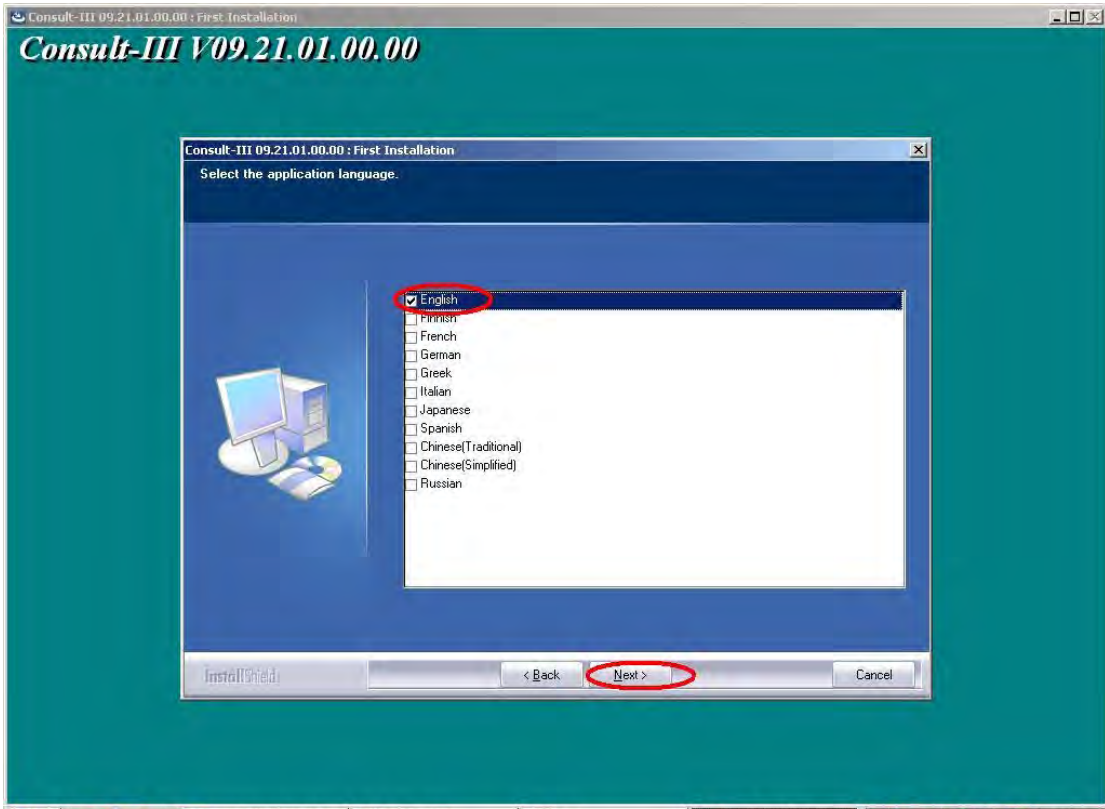


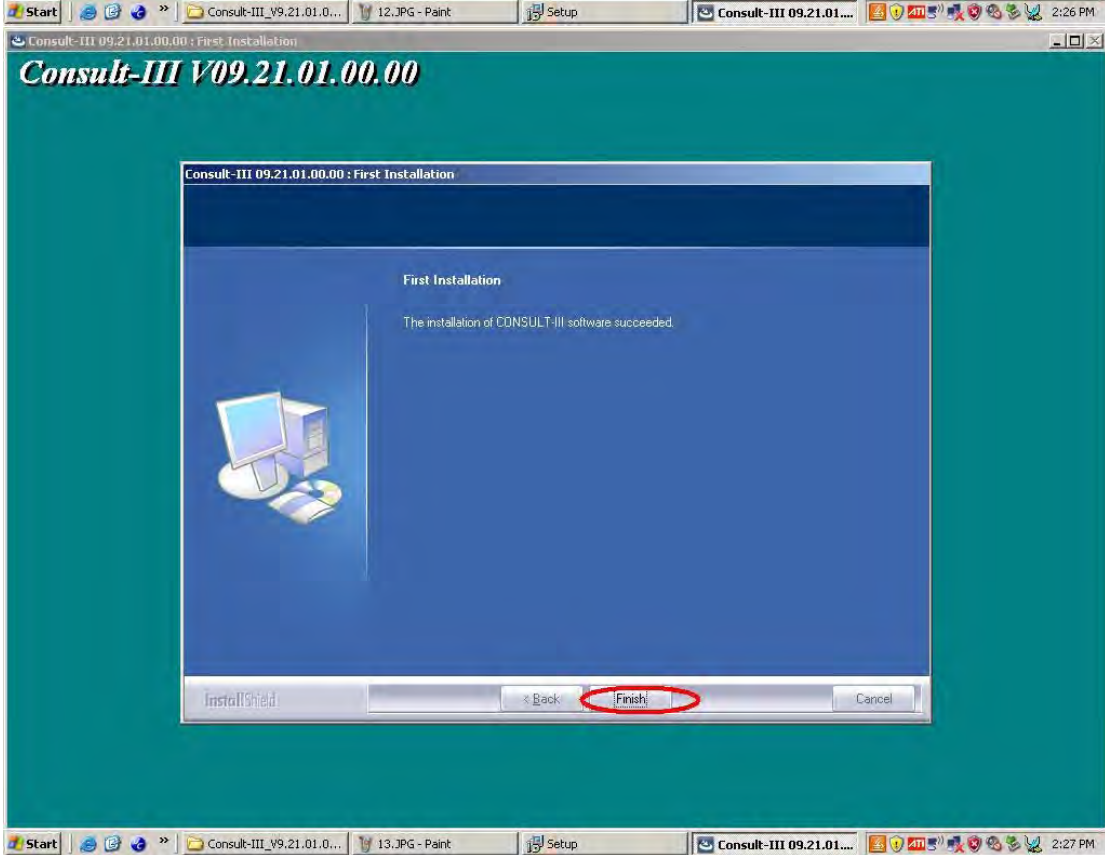
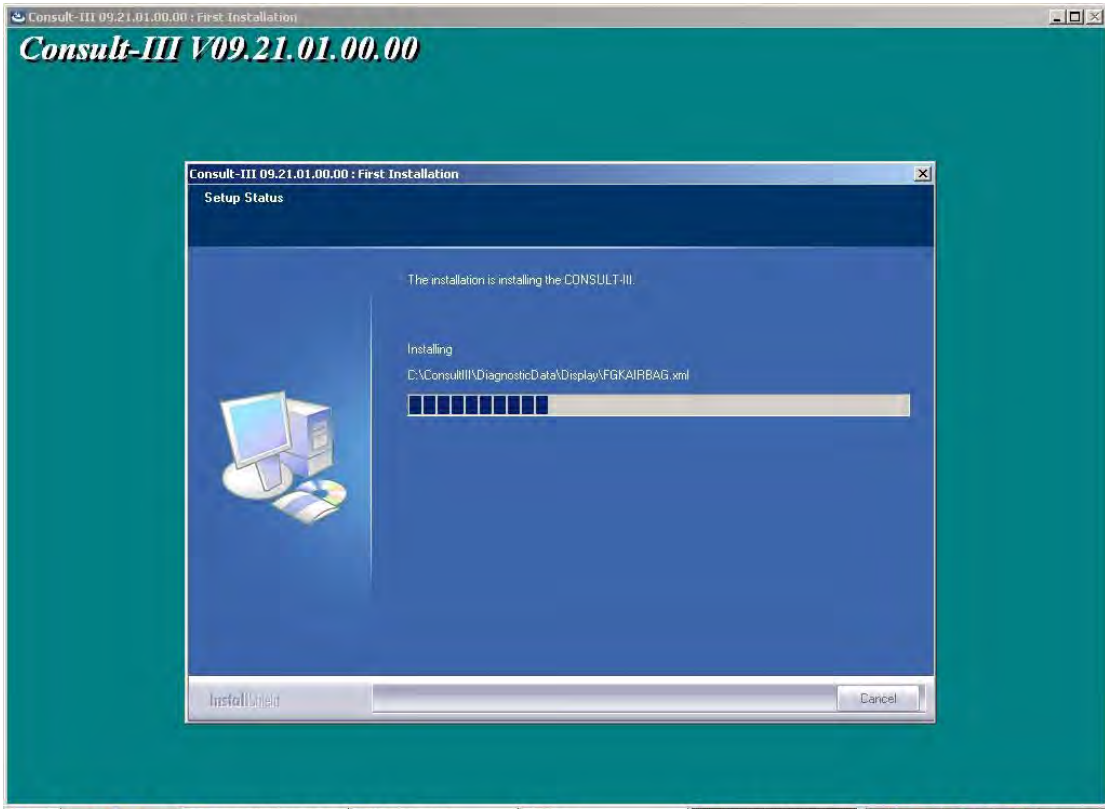




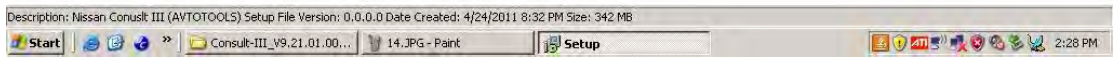
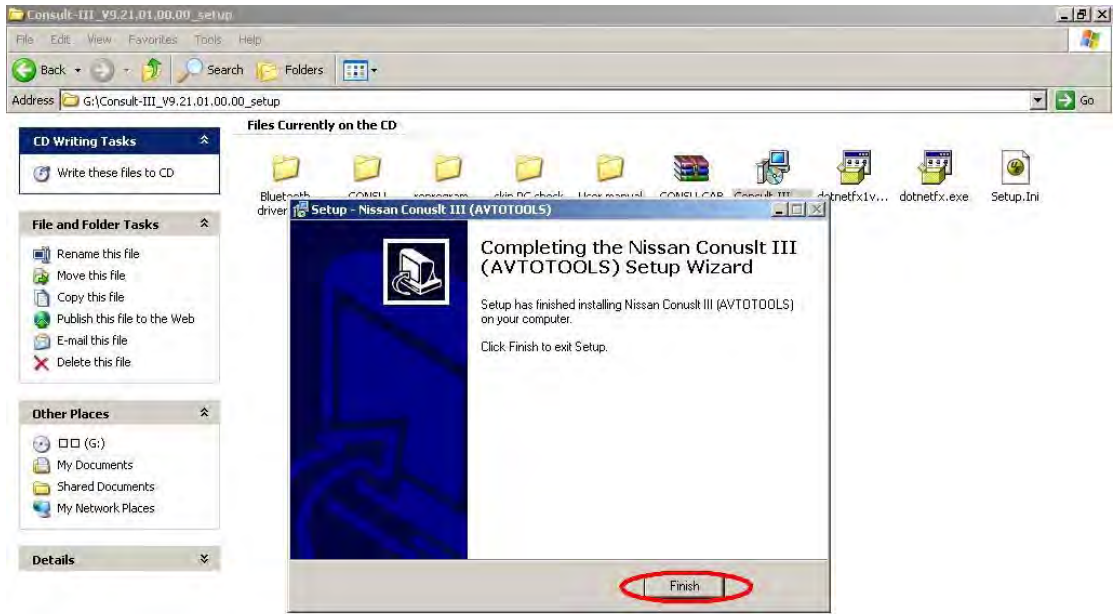




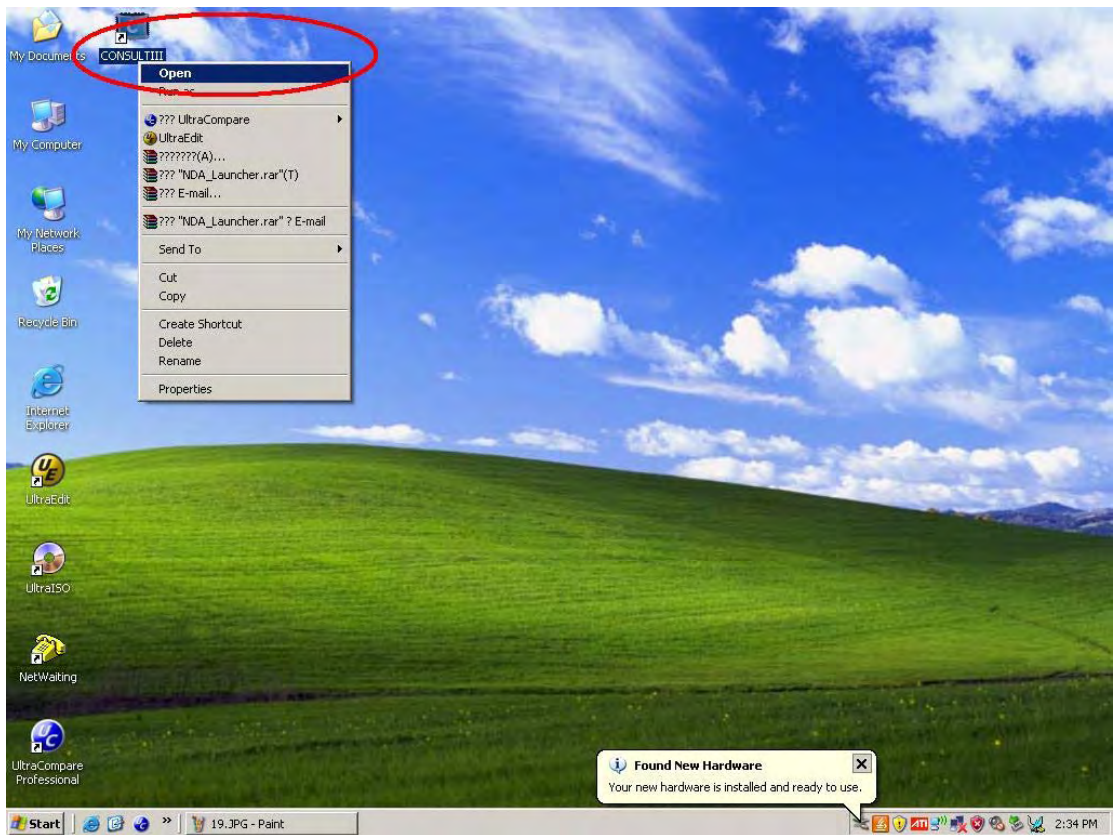




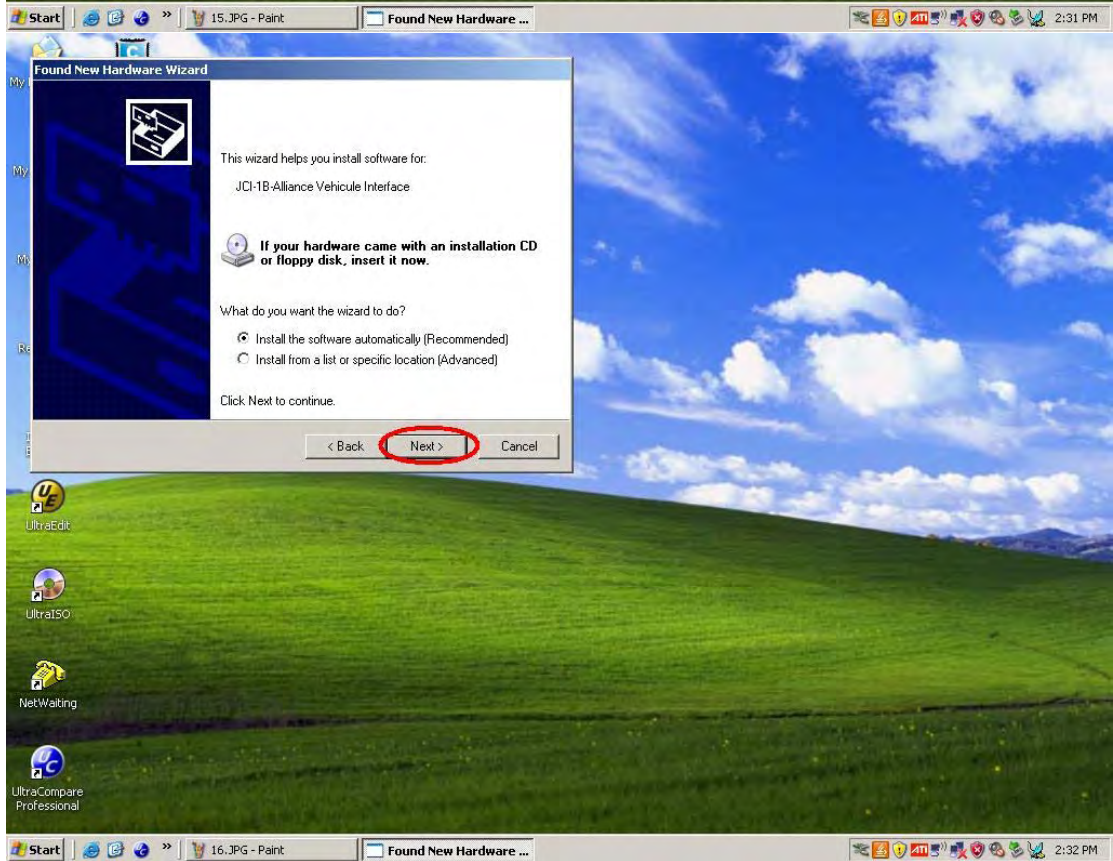
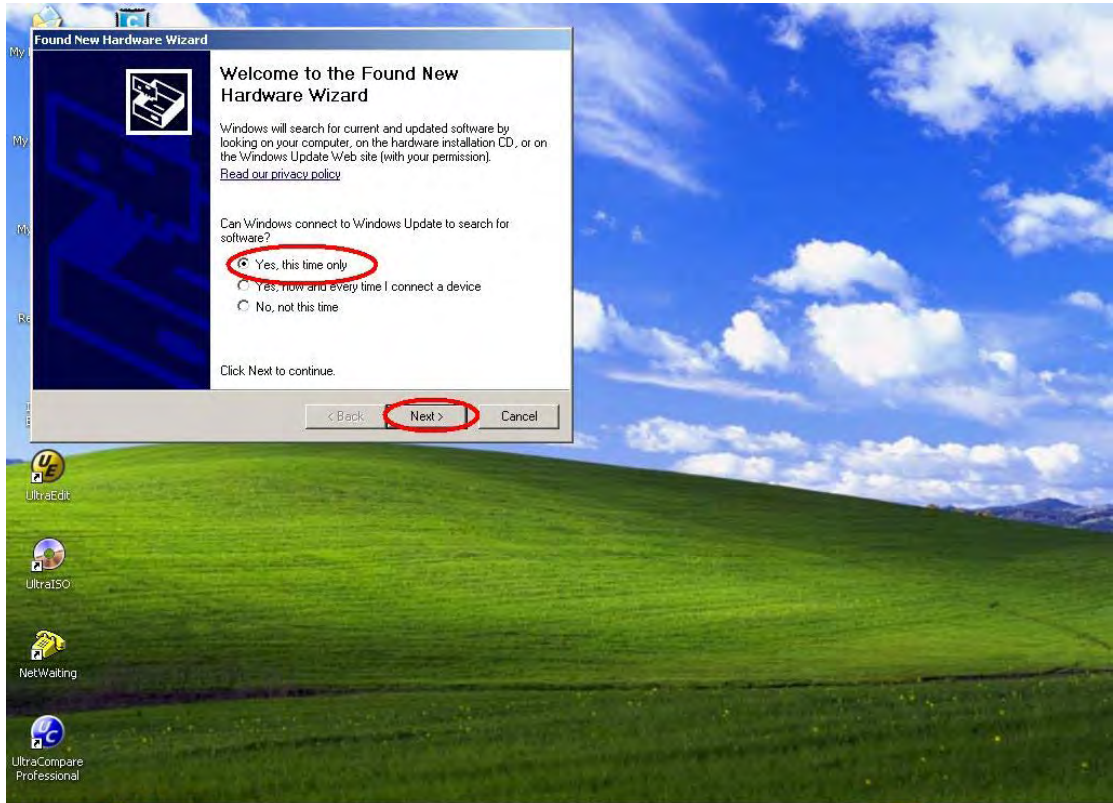




Secondly, Found New Hardware



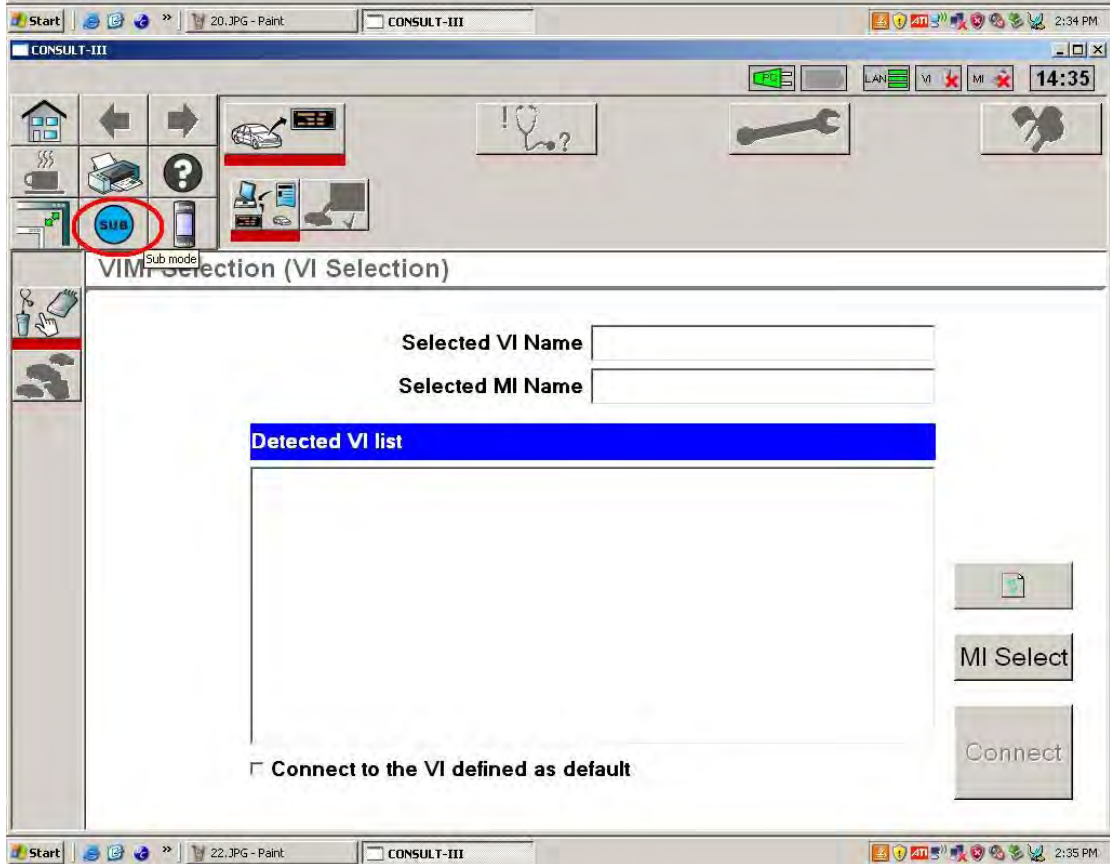
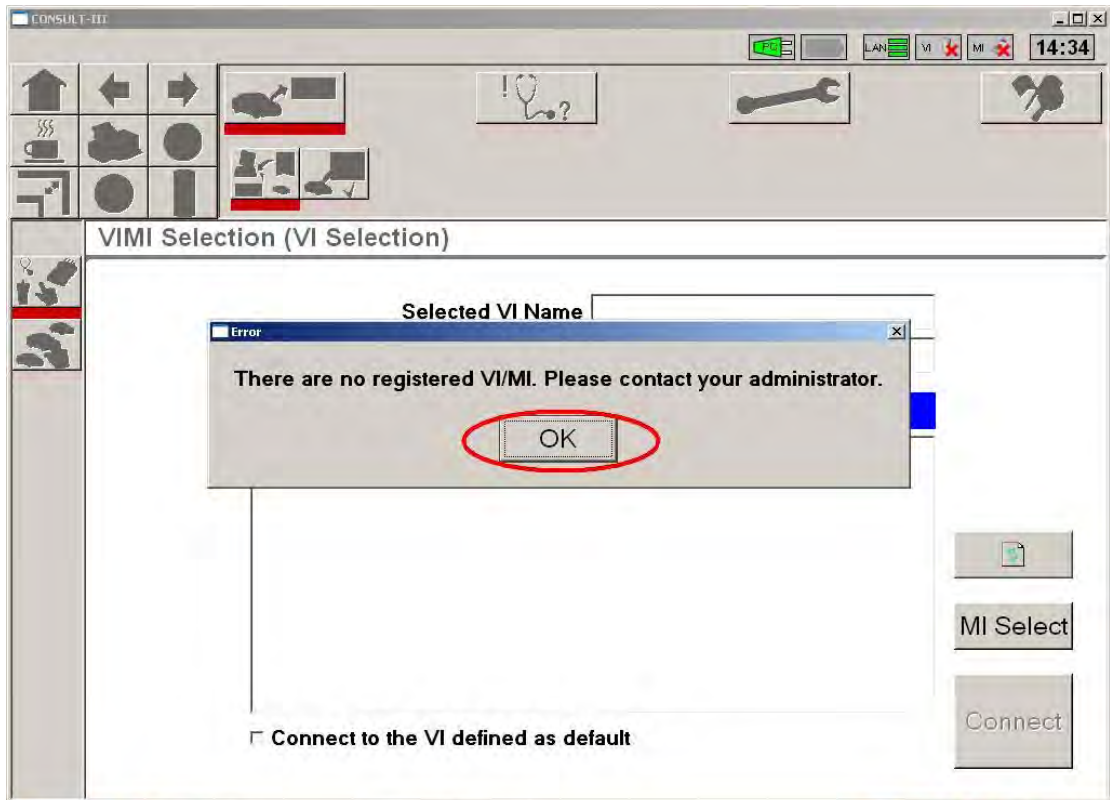




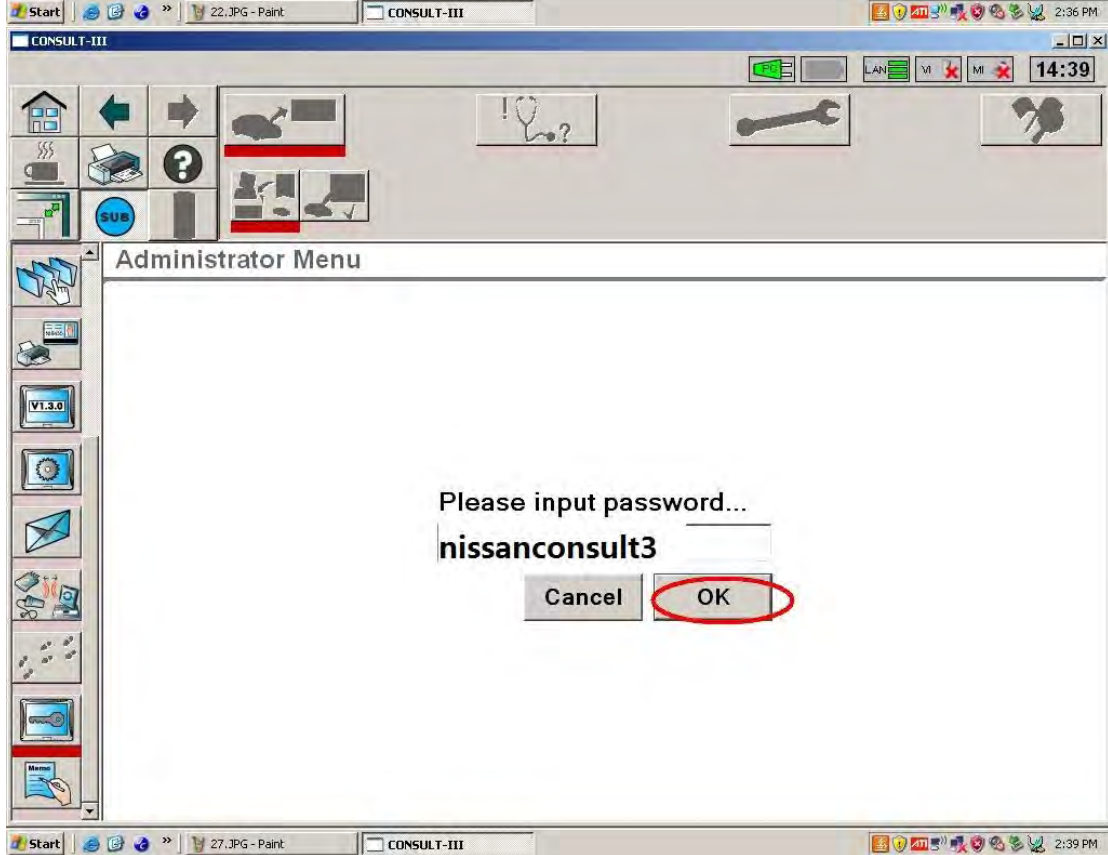
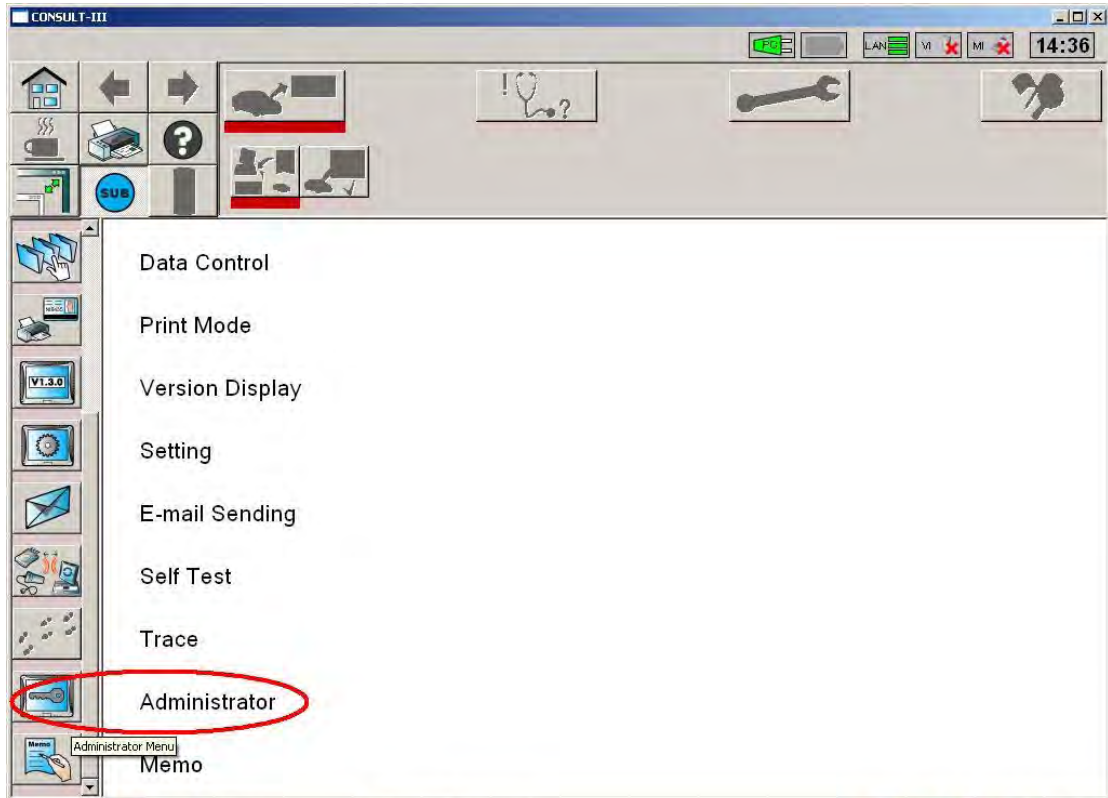


Thirdly, VI Selection Steps









Input Password: "nissanconsult3"



### Administrator Menu

VIMI Registration

VIMI Configuration

Hidden Mode

The Administrator Menu is displayed in a central panel. It contains three buttons: 'VIMI Registration' (circled in red), 'VIMI Configuration', and 'Hidden Mode'. A vertical toolbar on the left side of the menu contains various system icons.

### VIMI Registration

VI serial Number  CLEAR

MI serial Number  Set

VI list	MI list

Delete

Export

Import

The VIMI Registration screen features two input fields for 'VI serial Number' (containing '926573') and 'MI serial Number'. A 'Set' button (circled in red) is positioned to the right of the MI field. Below the inputs is a table with two columns: 'VI list' and 'MI list'. At the bottom right, there are buttons for 'Delete', 'Export', and 'Import'. The 'VI serial Number' field is also circled in red.

CONSULT-III 14:39

Home, Back, Forward, Stethoscope, Wrench, Key

VI 3.0, SUB

### VIMI Registration

VI serial Number  CLEAR  
MI serial Number  Set

VI list	MI list
926573	

Delete  
Export  
Import

Start 26.JPG - Paint CONSULT-III 2:39 PM

CONSULT-III 14:40

Home, Back, Forward, Stethoscope, Wrench, Key

VI 3.0, SUB

### VIMI Selection (VI Selection)

Selected VI Name   
Selected MI Name

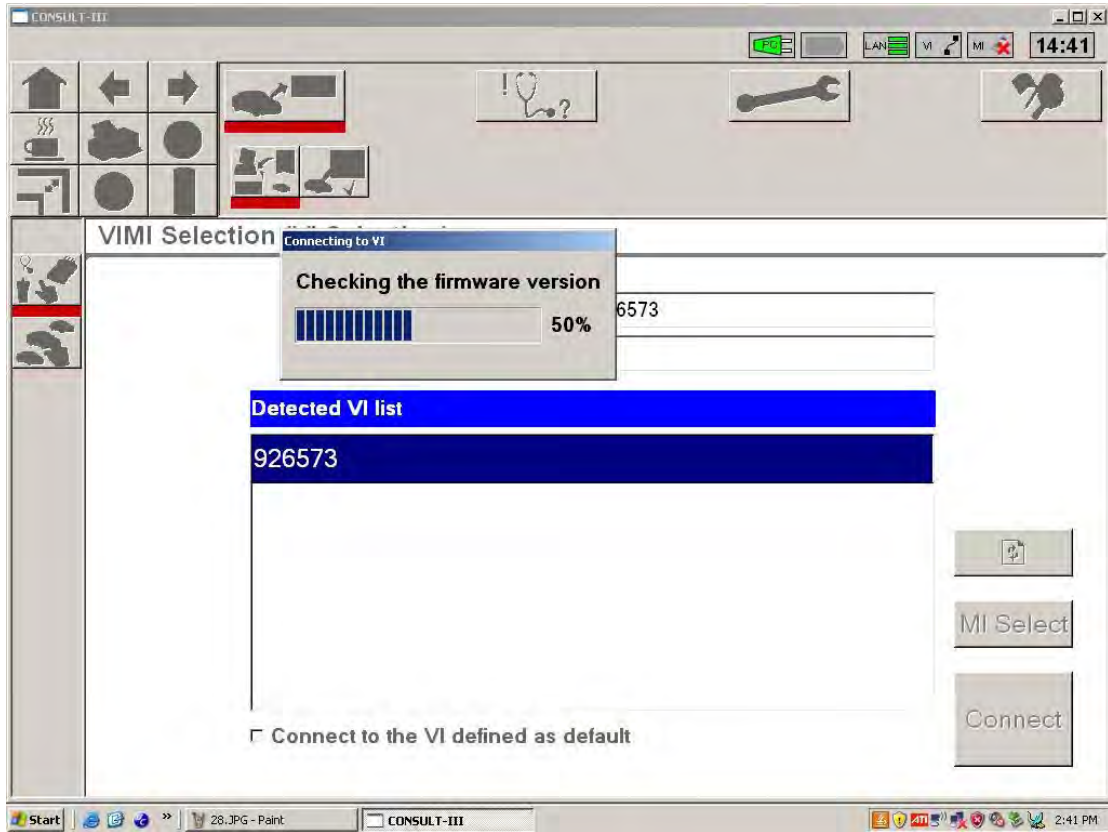
Detected VI list

926573
--------

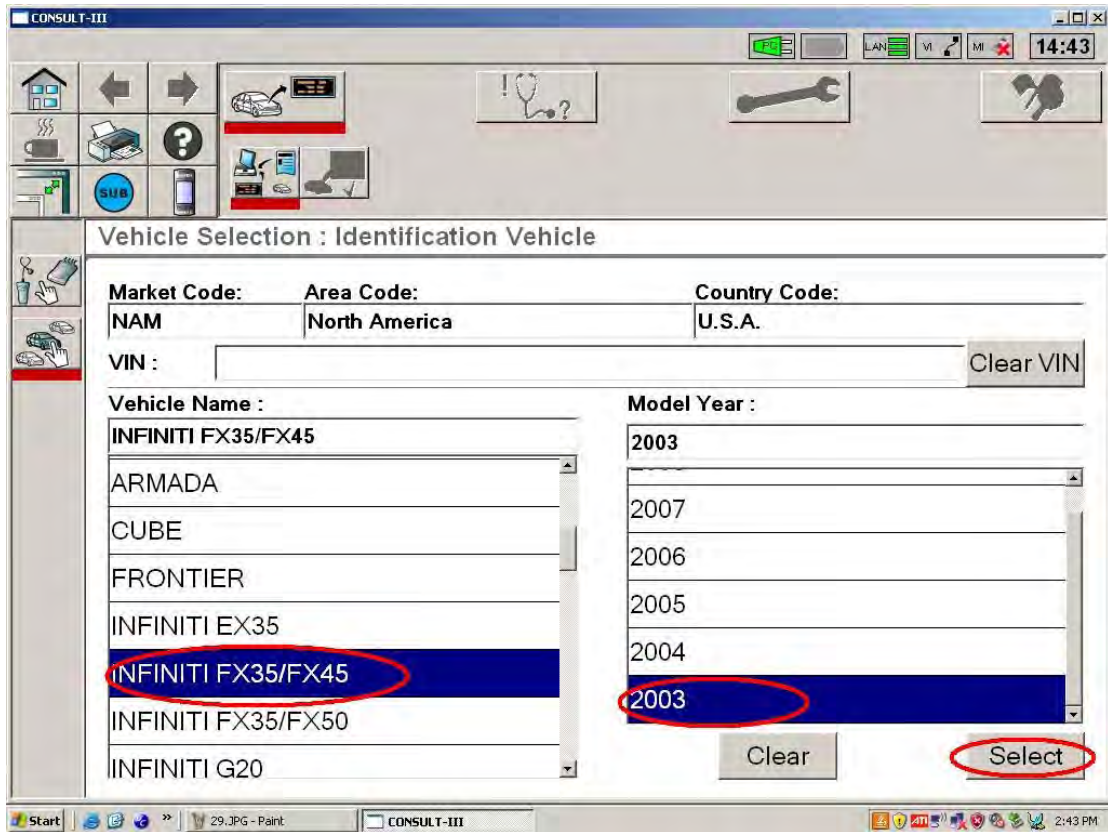
Connect to the VI defined as default

MI Select  
Connect





Forthly, Vehicle Selection



CONSULT-III 14:43

Vehicle Selection : Confirmation Vehicle

Market Code:  Area Code:  Country Code:

VIN :

Vehicle Name

Model Year :

CONSULT-III 14:44


System Scope

Select System Shortcut

- ENGINE
- ABS
- METER/M&A
- BCM
- AIR BAG
- ICC/ADAS
- HVAC

System

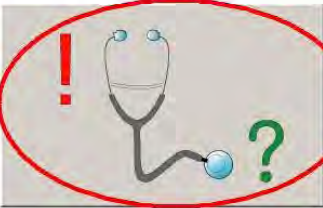
ENGINE

System Call  81%

CONSULT-III

14:44


Work Selection



**Diagnosis**

To perform diagnosis, touch the button, "Diagnosis".

- CAN Diagnosis
- All DTC Reading
- ECU Identification
- Self Diagnostic Result
- Data Monitor
- Active Test
- Function Test
- DTC & SRT Confirmation



**Repair**

To perform operation required after parts replacement or key registration etc, touch the button, "Repair".

- System selection
- ECU Identification
- Work support
- Configuration
- Reprogramming
- NATS

CONSULT-III

14:45

All DTC Reading

ENGINE		Select	Store
<a href="#">Expl</a>	<a href="#">FFD</a>	P0115 : ECT SEN/CIRC	0
<a href="#">Expl</a>	<a href="#">FFD</a>	P0110 : AIR TEMP SEN/CIRC	1t
<a href="#">Expl</a>	<a href="#">FFD</a>	P0180 : FUEL TEMP SEN/CIRC	1t
<a href="#">Expl</a>	<a href="#">FFD</a>	P1490 : VC/V BYPASS/V	1t
<a href="#">Expl</a>	<a href="#">FFD</a>	P0105 : ABSL PRES SEN/CIRC	1t
<a href="#">Expl</a>	<a href="#">FFD</a>	P0446 : VENT CONTROL VALVE	1t
<a href="#">Expl</a>	<a href="#">FFD</a>	P1464 : FUEL LEVEL SEN/CIRC	1t

Print