

As for the **VVDI BIMTOOL PRO Tool** highlight: BMW Exx, F/G programming and coding is the most important new feature. The ethernet interface will speed up the writing data instead of the USB cable previously used to connect to BMW Tool.

## Part 1. Program / Code BMW Exx

### 1. Connect Car

Can auto detect vehicle model, read module information, support chassis: E36, E38, E39, E46, E52, E53, E60, E63, E64, E65, E66, E67, E70, E71, E72, E83, E85, E86, E89, E90, E91, E92, E93, K1X, K24, KH2, R50, R52, R53, R55, R56, R57, RR1, etc chassis

The screenshot shows the BMW TOOL V1.4.7 software interface. The title bar includes the version number, remaining synchronization time (26 days), and a serial number (SM: BM01209299). The main window is divided into several sections:

- Left Sidebar:** Contains icons and labels for various functions: CAS Information, CAS Key Learn, FEM/BDC Key Learn, Exchange ECU/CAS, SHP Gearbox, Exx Program/Code, and Fxx/Gxx Program/Code.
- Car type:** A dropdown menu showing "E65-(E66,E67)/7er".
- Car Information:** A text box displaying vehicle details: VIN: WBAGW24000BR00040, Type: left-hand drive, Door number: Sedan, Work type: REAR WHEEL, Platform: E66, Produce date: 2003-11, Area: EUR, Brand name: BMW PKW, and ECU type: M54.
- Module List Table:** A table with columns for Address, Name, SGBD, HW. Number, and Infor. The first row is highlighted in blue and contains the following data:

Address	Name	SGBD	HW. Number	Infor
40	CAS	CAS	6942489	Car Access System
- Function Panel:** A vertical list of buttons with icons for: Connect car, Vehicle configuration(FA/FP), Gateway registered unit, FA calculate unit, Module information/DTCs, Unit coding, and Unit programming.
- Bottom Status Bar:** Displays "Task processing... - E65 - IDENT\_FUNKTIONALCompleted." and a logo for "3 5" with the website "www.eboll.com".

### 2. Read and write Vehicle configuration(FA/FP)

Can read the configuration information inside of the vehicle module, and to change the vehicle configuration information for replacing second-hand module.

E65: VBAG Car config information (FA/FP)

SalapA | E-Word | HO-Word

Cur VO	Content	All VO	Content
116	Standartenhalter links	116	Standartenhalter links
202	Steptronik, Zeile wird fuer PPP's benoetigt	117	Standartenhalter rechts
216	Servotronik	118	Reduzierung Hoechstgeschwindigkeit
220	Niveauregulierung in Verbindung mit Luftfederung an	131	Waffenhalterung fuer 3 Waffer
238	Alu-Guss Rad 245	144	RKA I Abnehmb. Tonf. Polizeisch.
245	Lenksaeulerverstellung elektrisch	167	Abgasnorm EU4 (fuer Dieselmotor)
261	Seitenairbags fuer Fondpassagiere	168	Abgasnorm EU2
302	Alarmanlage: DWA mit Innenraumschutz und Notstron	169	Abgasnorm EU3
316	aut. Heckklappe	170	VB einb. AEG
323	Soft Close Automatik mit Kindersicherung	172	Vorb. ethanolhaltiger Kraftstoff, Entfaellt lt. PN 8445
403	Glas-Schiebe-Hebedach	179	Reizgassensoren
415	Sonnenschutzrollo Heckscheibe elektrisch	180	VB Dachantenne
423	Veloursmatten vorn und hinten	181	Montage Heckantenne
428	Warndreieck und Verbandstasche	182	Feuerloescher

Buttons: Add << | Deletz >>

Function: Read vehicle configuration(FA) | Load vehicle configuration(FA) | Save vehicle configuration(FA) | Write config (305) | www.obd305.com

### 3. Registered unit information from gateway / Calculate adaptive control unit

Read registered unit information from gateway

Calculate adaptive control unit-calculate all control units of the current vehicle based on configuration information

BMW TOOL V1.4.7 Remaining Synchronization Time: 26 days SN: BM01209299

Options: Key Learn Special Function Update Online

Car type: **E65-(E66,E67)/7er**

Car Information

VIN: WBW...  
 Type: left-hand drive  
 Door number: Sedan  
 Work type: REAR WHEEL  
 Platform: E66  
 Produce date: 2003-11  
 Area: EUR  
 Brand name: BMW PKW  
 ECU type: M54

Address	Name	SGBD	HW. Number	Infor
01	SIM/SGM/ACSM	SIM	-	Safety Information Mo
02	SZL	SZL	-	Satellite Steering Colu
03	SASL/FGS	SASL	-	Satellite A Pillar Left
04	SASR/VOCS_FA	SASR	-	Satellite A Pillar Right
05	STVL/TEFA/VOCS_FB	STVL	-	Satellite Front Door Le
06	STVR/TEBF/TSCV	STVR	-	Satellite Front Door Rig
07	SSGA	SSGA	-	Satellite Driver Seat
08	SSBF	SSBF	-	Satellite Passenger Sei
09	SBSL	SBSL	-	Satellite B Pillar Left
0A	SRSR	SRSR	-	Satellite B Pillar Right

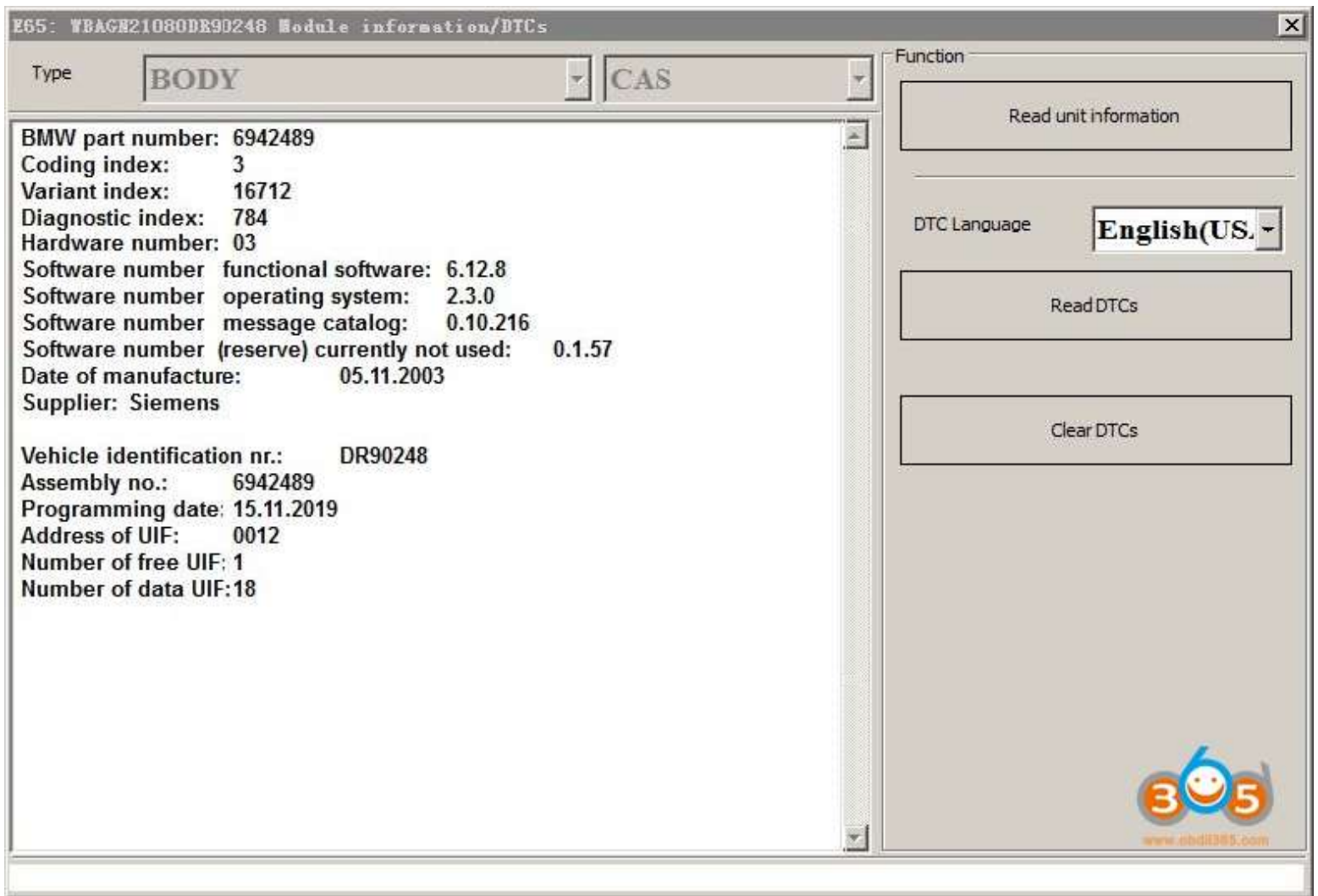
Function

- Connect car
- Vehicle configuration(FA/FP)
- Gateway registered unit
- FA calculate unit
- Module information/DTCs
- Unit coding
- Unit programming

www.abell345.com

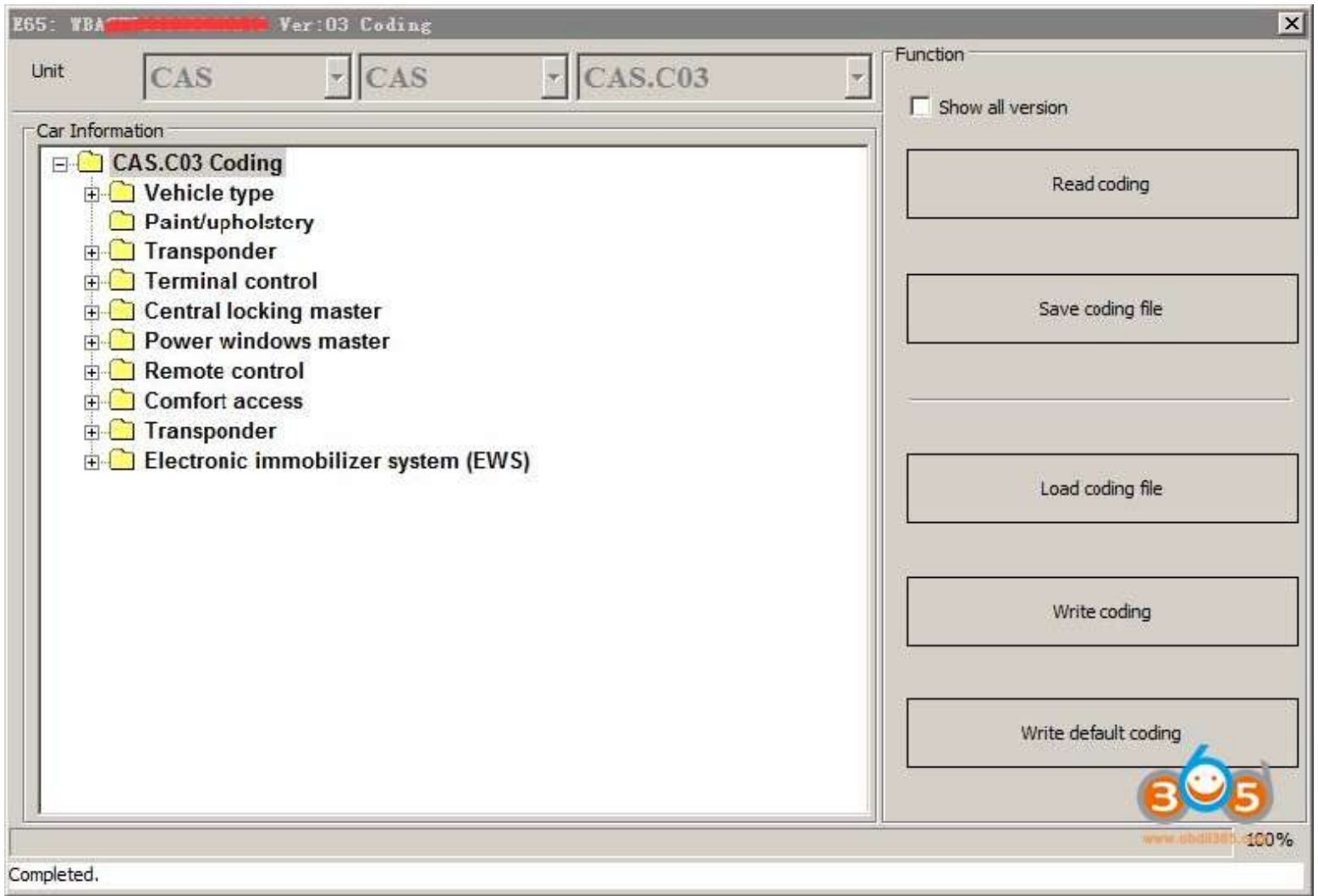
#### 4. Module information/DTCs

Read the specific information of selected module, then read and clear DTCs .,etc



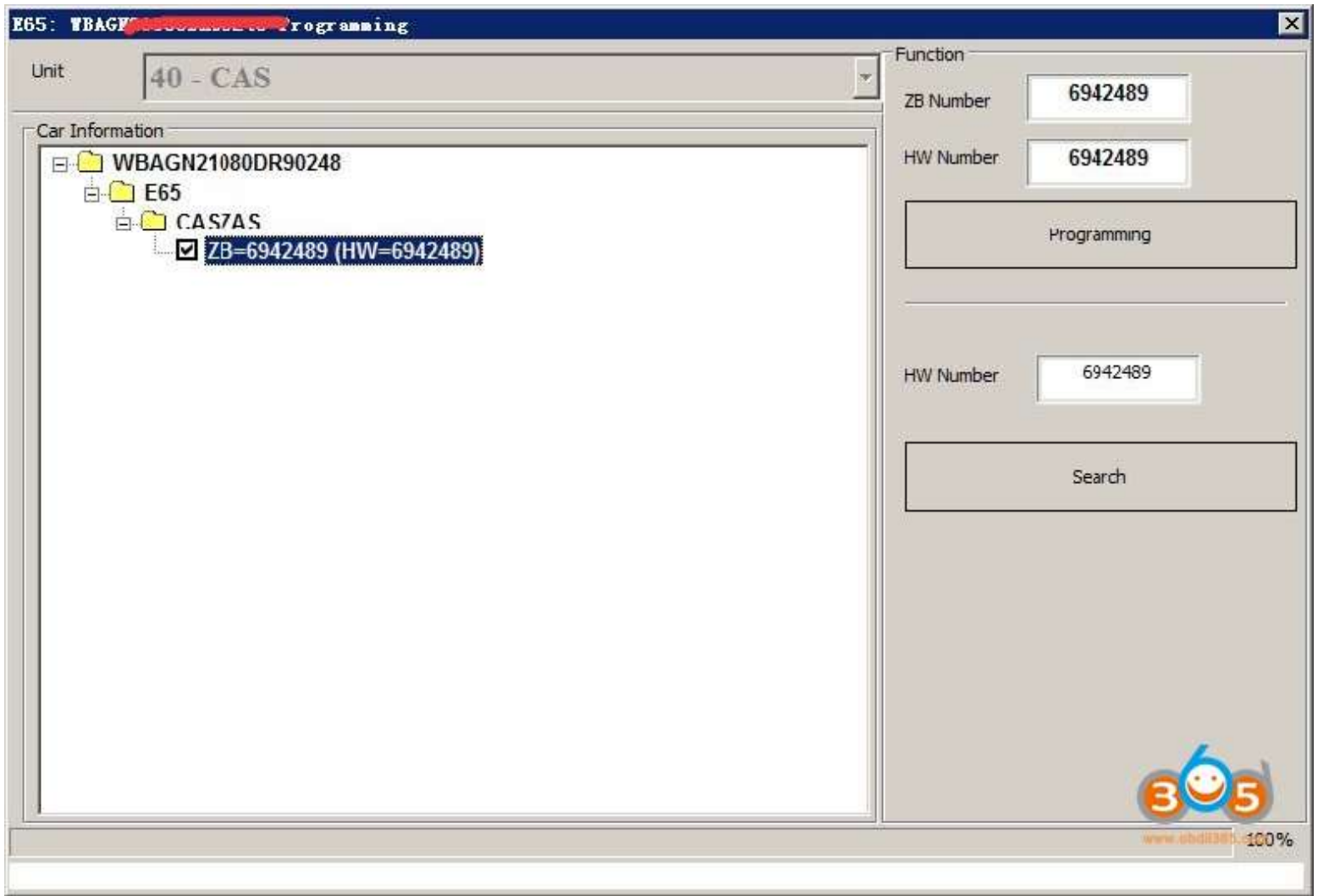
## 5. Unit coding

Read the coding information of selected unit, save coding, load coding, write coding and calculate the default coding based on the vehicle configuration information etc.



## 6. Module programming

According to the hardware version number and ZB version number in the current module, search for the supported programming files and perform programming functions



## Part 2. Program / Code Fxx / Gxx

1. Connect to car

Auto detect vehicle model, and read the information inside of module.

BMW TOOL V1.4.7 Remaining Synchronization Time: 26 days SN: BM01209299

Options Key Learn Special Function Update Online

Car type **F020**

Car Information

VIN: WBA1S1101H5H23289  
 Series: F020  
 Cur: F020-13-11-504  
 Last: F020-13-11-504  
 Shipment: F020-13-11-504  
 Type key: 1A32  
 Time criteria: 0314  
 Color code: 0300  
 Fabric code: KCSW  
 Traction :RWD

WBA1S1101H5H23289

- [-] FEM\_GW - (10)
  - ...HWEL\_00000792\_000\_005\_002
  - ...HWAP\_00000F38\_255\_255\_255
  - ...HWAP\_00000F3A\_255\_255\_255
  - ...HWAP\_00000F3B\_255\_255\_255
  - ...HWAP\_00000F3D\_255\_255\_255
  - ...BTLD\_0000079C\_004\_010\_020
  - ...SWFL\_0000079D\_004\_010\_040
  - ...SWFL\_0000079E\_004\_019\_002
- [-] FEM\_BODY (40)
  - ...HWEL\_00000792\_000\_005\_002
  - ...HWAP\_00000F26\_255\_255\_255
  - ...HWAP\_00000F29\_255\_255\_255
  - ...HWAP\_00000F2B\_255\_255\_255
  - ...HWAP\_00000F2C\_255\_255\_255

Function

- Connect car
- Vehicle configuration(FA/FP)
- Clear DTCs
- Vehicle coding
- Vehicle programming

Reading data, please wait.....Success.

## 2. Read & write vehicle configuration(FA/FP)

Can read the vehicle configuration information inside of module, and change the vehicle configuration information for replacing second hand module.

PO20: WBA1S... config information (FA/FP)

SalapA | E-Word | HO-Word

Cur VO	Content	All VO	Content
1CA	1CA_SELECTION_COP_RELEVANT	161	161_EU5_EXHAUST_EMISSIONS_NORM
205	205_AUTOMATIC	163	163_EU6_EXHAUST_EMISSIONS_NORM
249	249_MULTIFUNCTION_FOR_STEERING_WHEEL	164	Unknown
255	255_SPORTS_STEERING_WHEEL	169	169_EU3_EMISSIONS_STANDARD
258	258_RUNFLAT_TYRES	1A1	1A1_EQUIPMENT_FOR_COKING_FUELS
2DT	2DT_ALY_WHEELS_STAR_SPOKE_379	1AE	1AE_ACTIVE_FLEX_ETHANOL_E100
3BE	3BE_MIRROR_CAPS_BLACK	1AF	1AF_EXTENDED_FUEL_FILLER_PIPE
403	403_GLASS_ROOF_ELECTR	1AK	1AK_EXTERNAL_FUEL_FILTER
423	423_FLOOR_MATS_VELOUR	1CA	1CA_SELECTION_COP_RELEVANT
430	430_INTER_EXTER_MIRROR_ANTI_DAZZLE	1CB	1CB_ACEA_CO2
431	431_INTERIOR_REAR_VIEW_MIRROR_ANTI_DAZZLE	1DC	Unknown
459	459_SEAT_ADJUSTM_ELECTR_MEMORY_DRIVER_FRONT	1DE	1DE_RDE_EXHAUST_EMISSIONS_NORM
481	481_SPORT_SEATS_DRIVER_FRONT_PASSENGER	1DF	Unknown
4AD	4AD_INTERIOR_ALUM_LENGTHWISE_FINE	1MA	Unknown

Buttons: Add << | Delete >>

Function:

Read vehicle configuration(FA) | Load vehicle configuration(FA) | Save vehicle configuration(FA) | Write configuration(FA)

www.obd365.com

### 3. Read / Clear DTCs

Can read and clear DTCs for vehicle maintenance.



**F020: TBA1S: [REDACTED] View**

Unit Na...	DTC Nu...	Content
10	00CD0487	ZGM: Synchronisation process for FlexRay failed
	00CD1410	Message (system time, 0x328) missing, receiver ZGM2, transmitter KOMBI
	00801C20	ZGM: central fault memory full - no control-unit fault
40	0003000E	Power window, driver's door: line disconnection
	0003000F	Power window, driver's door: line disconnection
	00030020	Power window, driver's door: system is not standardised.
	0003008E	Power window, passenger's door: Hall sensor, open circuit or short circuit to
	0003008F	Power window, passenger's door: Hall sensor, open circuit or short circuit to
	000300A0	Front passenger door power window regulator: system not normalised.
	00030350	Steering column switch cluster (SZL): No LIN-slave
	00030352	Steering column switch cluster (SZL): message ST_SZL_LIN not current
	00030410	K-LIN_11 MFL: No LIN-slave Multifunction steering wheel (MFL): Missing LIN slave
	00030490	K-LIN_11 LRE: No LIN-slave Steering wheel electronics module (LRE): Missing LIN slave
	00804014	No supply voltage to Terminal 30L2
	00804020	Encoding: Fault occurred during encoding process
	00804024	Encoding: Control unit is not encoded.
	00904087	START_STOP button hall effect sensor B: Line disconnection or short circuit t

Function

DTC Language: **English**


Read DTCs

Clear DTCs

Close transport mode

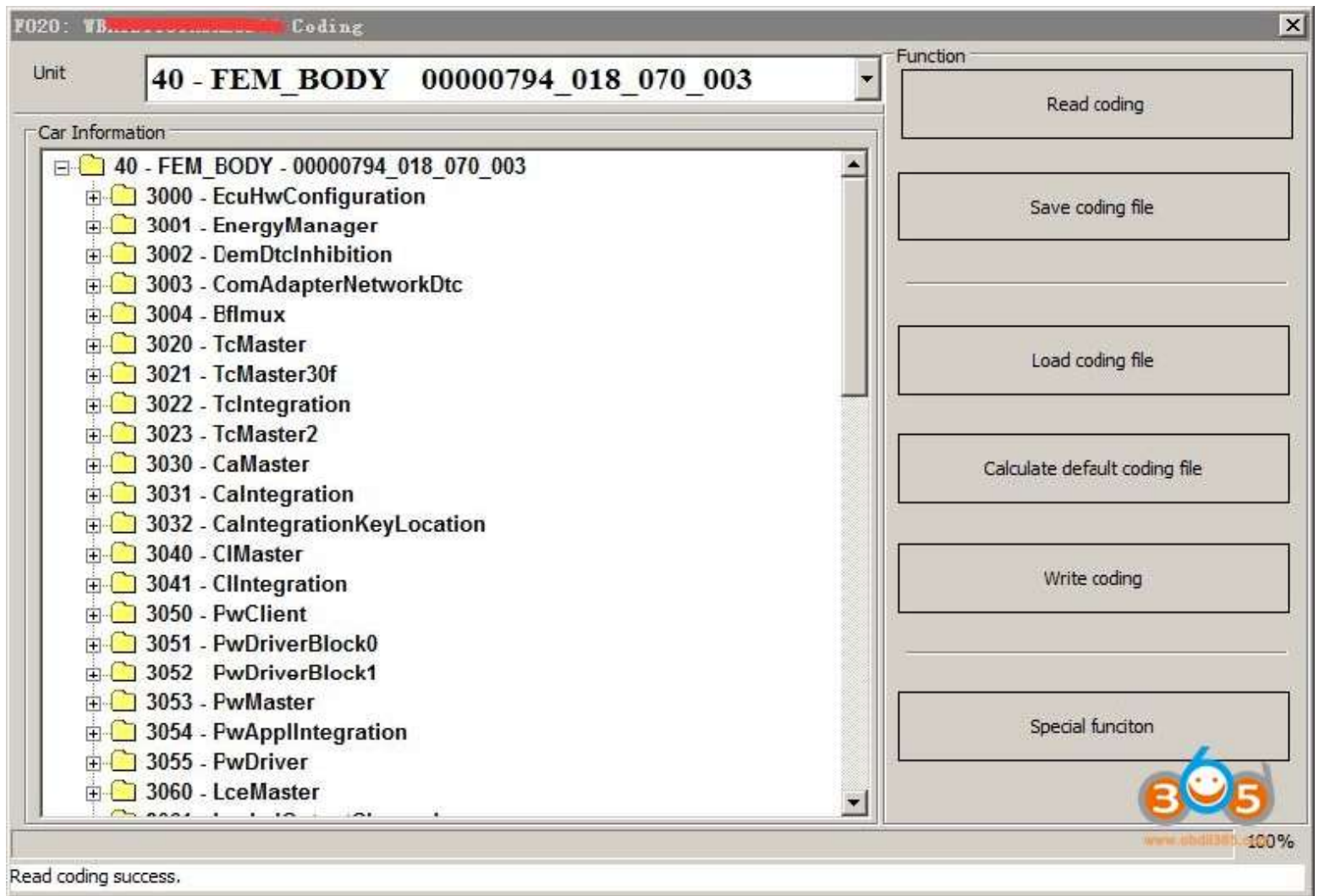
Reset FEM to start

Reading DTCs...Success. Total DTCs: 92



#### 4. Vehicle coding

Can read out the coding information inside of module, the user can change the corresponding value as required to realize some configuration functions.



#### Features:

- 1). Read the coding: read the code information in the module
- 2). Save coding file: Save the coding information to a file
- 3). Load coding file: Load the coding file that is saved.
- 4). Calculate the default coding: If the default coding of module is lost, it will be calculated according to the vehicle configuration information
- 5). Write coding: write the coding to the module
- 6). Hide function: We have re-organized some of the frequently-used configuration changes option, see the figure below:

FO20: WBA [redacted] coding

Unit: **40 - FEM\_BODY 00000794\_018\_070\_003**

Car Information

TCM_STARTLOCK_BRAKE	+
TCM_LOGIC_R_OFF_DOOR	
TCM_MSA_DEFAULT_OFF	-
TCM_MSA_MEMORY	-
FH_TUERAUF_STOP_MAUT	+
KOMFORT_SCHLIESSEN	15
BLINKZYKLEN_ANZAHL_TIPP	00
ESS_AKTIVIERBARER_AUSGANG	bremslicht_blinkend
WB_GB_ENABLE	+
MAPPING_ABBIEGEL_L_OUTPUT	off
MAPPING_ABBIEGEL_R_OUTPUT	off
MAPPING_NEBELSCHW_L_PART_OF_WL	not_active
MAPPING_NEBELSCHW_R_PART_OF_WL	not_active
KL_ENABLE_LI	KL_Aus
KL_ENABLE_RE	KL_Aus
AMBIENTE_HELLIGKEIT	100
IB_EINSCHALT_BEGR_ULOK	20
IB_EINSCHALT_BEGR_LOK	08
OVT_BEI RUECKFAHRLICHT	-
...	...

Function

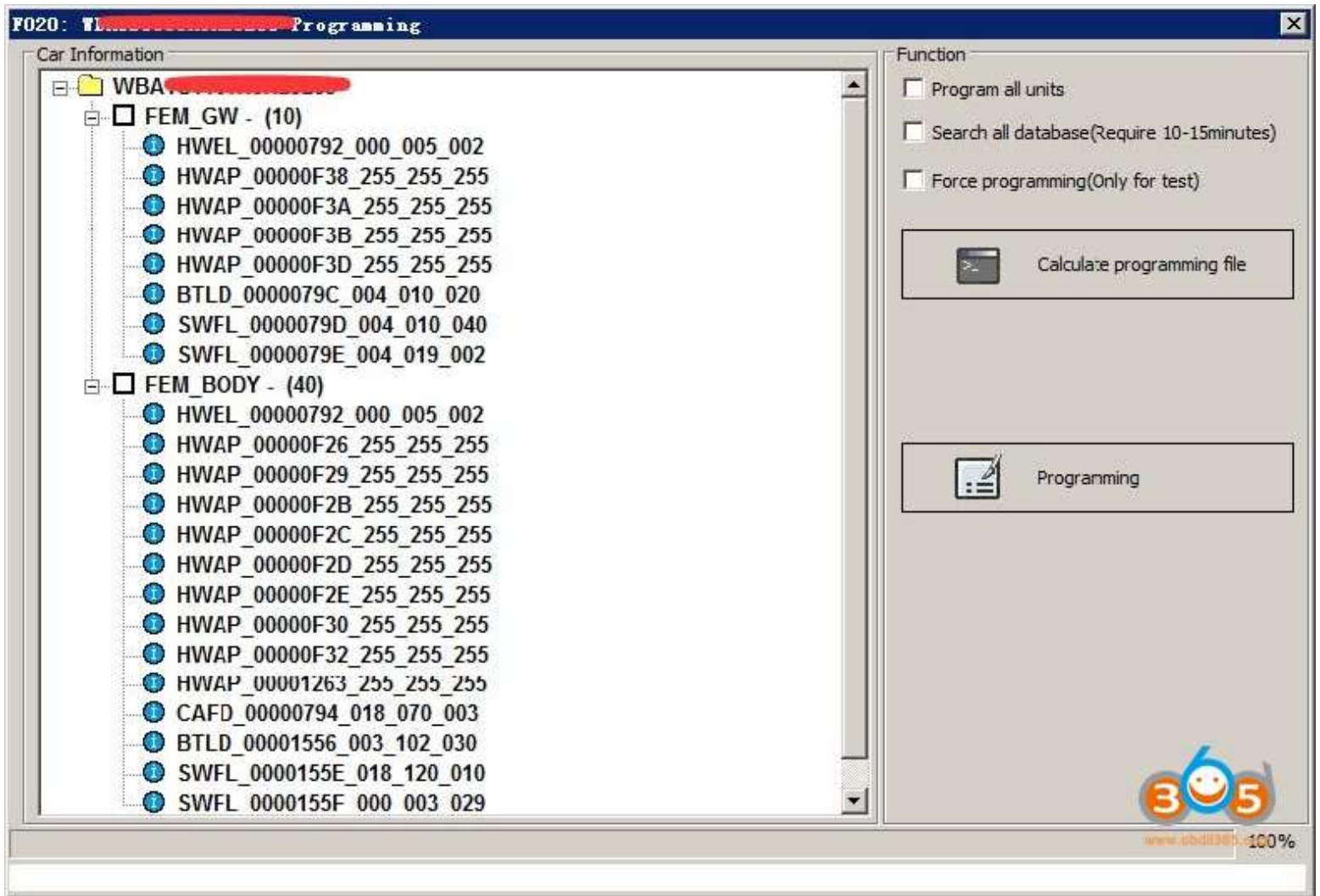
- Read coding
- Save coding file
- Load coding file
- Calculate default coding file
- Write coding
- Special function

www.obd385.com 100%

Read coding success.

### 5. Vehicle programming

From vehicle configuration information to calculate the related module flash information, and write to module.



Function description:

- 1). Program all units: From module configuration information to calculate vehicle all control units programming information
- 2). Search all database: Search all database, will not compare module inheritance hierarchy information
- 3). Calculate programming file: From configuration information to calculate module programming file, it takes time arrange around 10 seconds to tens of minutes.
- 4). Programming: Select related programming file and programming module

Interested in the detailed info of Xhorse VVDI BIMTool pro , look at here:

<https://www.obdii365.com/wholesale/xhorse-vvdi-bimtool-pro.html>